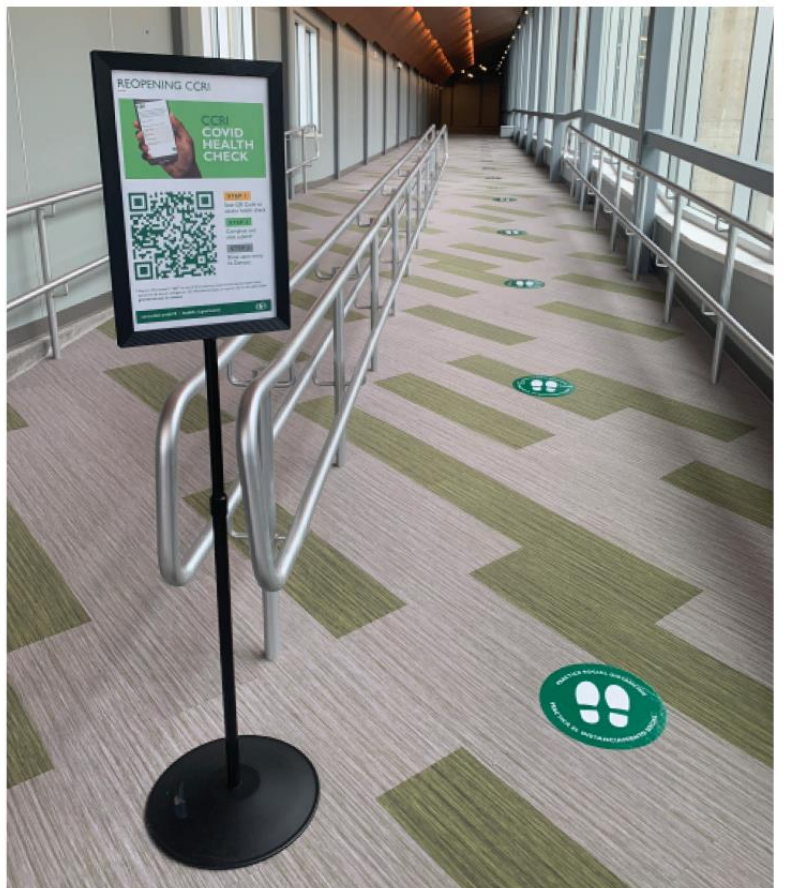


CCRI COVID STUDENT MANUAL

Rules to keep you safe on campus



EXPECTATIONS AND GUIDELINES

All students, faculty, and staff are expected to comply fully with the policies, protocols, and guidelines outlined here. Failure to comply with CCRI's COVID policies may result in disciplinary actions as outlined in the Student Handbook.

ACCESS TO CAMPUS

Students must not come to campus if they are sick. Students who become sick while on campus must immediately leave the campus and quarantine.

All individuals, regardless of vaccination status, are required to be COVID-19 screened upon arriving at each of our four campuses. Please plan for extra time for required COVID-19 screening. To allow for screening, access may be limited to specific entrances.

Please familiarize yourself with the questions that you will be required to answer. If you answer "yes" to any of the questions, you may not be admitted to campus.

You will be asked to complete a touchless temperature scan before you are allowed onto campus. Touchless temperature scanners will be set up at the entrance(s) of each campus. **Anyone with a temperature above 100.0 degrees Fahrenheit will not be allowed on campus.**

If students leave the building for whatever reason, they **MUST** re-enter through designated entrance points. Employees should **NOT** prop open exterior doors for any purpose without prior approval from Campus Police.

CCRI HEALTH CHECK

To ease congestion at campus entrance points, all students and employees should complete the online **CCRI COVID Health Check** form **BEFORE coming to campus** to show compliance with CDC guidance upon entry.

The **CCRI COVID Health Check** is available [here](#), and can be saved to the home screen of your mobile device. Once you answer "no" to the questions and submit the form, you will be asked to select the option that best describes you; among the choices are "student," "faculty," and "staff." Upon completing the questionnaire, you will see a screen with the date, time, and a green check mark that reads, "You are granted access to CCRI at this time." Please take a screen shot or leave the page open

on your device to show the date, time, and green check mark to Campus Police as you enter the building. **Please familiarize yourself with the questions that you will be required to answer.** If you answer “yes” to any of the questions, you may not be admitted to campus.

If you choose not to bookmark the **CCRI COVID Health Check**, you may scan the QR code posted on signs by the entrances and complete it while waiting to gain entrance. If you do not complete the form, you will be required to verbally attest to questions before gaining access to campus.

We strongly urge everyone to bookmark the link to and use the CCRI COVID Health Check form to limit delays accessing buildings.

Please note: Individual health information will not be collected or maintained by the college.

REOPENING CCRI

CCRI COVID HEALTH CHECK

STEP 1
Scan QR Code to access health check

STEP 2
Complete and click submit*

STEP 3
Show upon entry to Campus

* Anyone who answers "yes" to any of the screening questions and cannot explain these symptoms by known allergies or non-infectious illnesses, or anyone who is sick, will not be granted access to campus.

ccri.edu/covid-19 | health.rj.gov/covid

PERSONAL PROTECTIVE EQUIPMENT (face coverings/masks)

Students are required to wear a mask/face covering over both their nose and mouth at all times when on campus regardless of vaccination status. Students are expected to provide their own mask/face covering, however, the college will provide a mask/face covering at entry if a person comes to campus without one. Face shields without a face mask are not an acceptable face covering.



If you encounter anyone not wearing a face covering, maintain a physical distance of at least 3 feet. Please do not confront an individual who is not wearing a mask, as there may be a circumstance that prohibits them from wearing one. Students with concerns about compliance with the mask-wearing requirement should contact the **Dean of Students**.

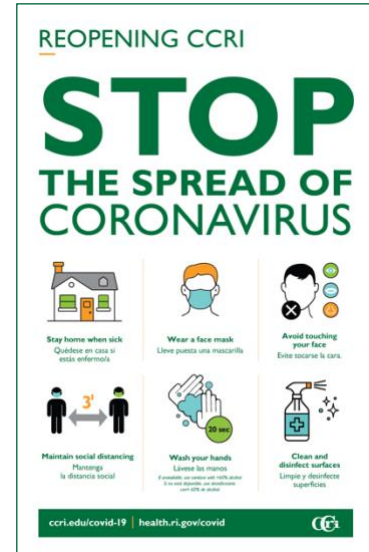
GLOVES/GOGGLES/FACE SHIELDS

The CDC indicates that gloves are not necessary for general use and do not replace good hand hygiene. Students, faculty, and staff do not need to wear goggles or face shields as part of general activity on campus. Health science students and personnel should follow the PPE guidelines for their specific work area.

SOCIAL DISTANCING

It is important to practice proper social distancing whenever possible, even when you have no symptoms. Students, faculty, and staff should follow these social distancing practices:

- Maintain social distancing whenever possible.
- All workstations should be oriented to maintain three (3) feet apart in all directions whenever possible.
- Do not gather in groups that cannot comply with social distancing.
- Stay out of crowded places and avoid large gatherings.
- Do not bring children, visitors, guests, or pets to the campus without prior written approval.
- Minimize movement around campus.



HANDWASHING AND HAND SANITIZERS

Wash your hands often with soap and water for at least 20 seconds, especially after you have been in a public space or after blowing your nose, coughing, sneezing, or touching your face. If soap and water are not readily available, use a hand sanitizer that contains at least 60% alcohol.

Hand sanitizer stations are available at multiple locations throughout the four campuses.



COUGHING/SNEEZING HYGIENE

If you are in an enclosed workspace/private office and you do not have a mask, remember to always cover your mouth and nose with a tissue when you cough or sneeze, or use the inside of your elbow. Throw tissues in the trash and immediately wash your hands with soap and water for at least 20 seconds or clean your hands with a hand sanitizer.



ENHANCED ENVIRONMENTAL HEALTH AND CLEANING PROCEDURES

CCRI's Facilities Management Department has enhanced protocols for cleaning materials and frequency while using appropriate personal protective equipment.

Many of the custodial services you have seen in the past in public spaces will continue as normal, including:

- Daily or more frequent cleaning of restrooms, lobbies, and break rooms



- Dusting and vacuuming
- Glass cleaning
- Emptying and relining trash and recycling receptacles
- Extra cleaning and sanitization

In addition to CCRI's standard cleaning, the college is using CDC-approved disinfectant products to sanitize frequently-touched surfaces, such as:

- Door handles
- Elevator buttons
- Light switches
- Handrails
- Other high-touch areas



CCRI will use disinfectant mist machines that increase the number of surfaces cleaned, and ensure hard-to-clean surfaces are disinfected in classrooms before the start of the first class and after the last class of the day.

RESTROOMS

Restrooms will be cleaned twice daily and will be monitored throughout the day for additional cleaning if needed. Restroom capacity has been reduced by closing off access to certain stalls and sinks to allow for social distancing. Face coverings are also required while inside a restroom.

Hand sanitizer dispensers are located near every restroom. Individuals should use hand sanitizer before entering and after exiting the restrooms and do their best to limit touching restroom surfaces.

VENTILATION

HVAC filters are replaced twice each year in compliance with OSHA requirements. CCRI will continue to monitor the air quality on each campus and replace filters and improve the efficiency of the system based on a feasibility study we are commissioning. In the short term, CCRI is securing a limited number of air filters for classrooms and labs.

WATER-FILLING STATIONS

Do not use communal water fountains. Touchless water bottle filling stations are located in the following locations:

Knight Campus:

- Ground floor by Physical Plant operations
- First floor by vending machines
- Third floor by Administration offices
- Sixth floor East corridor

Flanagan Campus:

- First floor by Enrollment Services

Liston Campus:

- First floor by Room 1142

Newport County Campus:

- Second floor by the public bathroom

CAMPUS PEDESTRIAN TRAFFIC FLOW

To minimize congestion and comply with social distancing guidelines, please take note of modifications to pedestrian foot traffic throughout the campus. For example; certain staircases will be designated up or down. Whenever possible, stay to the right in hallways and when ascending or descending stairs.

CONTACT TRACING

Any student, regardless if they have been on campus or not, who receives a positive COVID-19 test must isolate in compliance with the RIDOH regulations and contact CCRI's Contact Tracing team at ccrireporting@ccri.edu for further instructions and provide their name, date of birth, cell phone number, and the date they were last on campus.

TESTING CONSIDERATIONS

CCRI is establishing an on-campus COVID-19 surveillance testing protocol to commence this summer. More details on this protocol will be shared in the coming weeks. The college will be rapid testing 50% of the college community each week. With this test, the results are available in 15 minutes, which allows the college to respond quickly to a positive result. CCRI continues to encourage faculty, staff, and students to seek regular testing at community-based testing centers located across the state. For information on testing sites, please visit covid.ri.gov/testing.

VACCINE CONSIDERATIONS

CCRI strongly encourages all eligible individuals to receive the COVID vaccine. Broad immunization is critical to help stop the current pandemic and to protect our college community, as well as the fastest path to returning to a much more normal existence, including here at CCRI.

Benefits specific to the CCRI community include:

- An expedited return to pre-pandemic normal.
- Additional face-to-face course offerings and academic experiences.
- Opportunities for a wider range of events and activities offered at our campuses.

- Greater interpersonal collaboration among faculty, students, and staff.

Most importantly, a safer CCRI community supports a safer Rhode Island for our families, friends, and neighbors across the state.

FOOD SERVICE AND DINING SPACES

CCRI Dining Services, including cafeterias and on-campus catering, will be limited for the summersessions. Vending machines for snacks and drinks, as well as fresh sandwiches, will be available throughout the semester.

The use of seating areas in dining and common spaces will be limited with modified furniture configurations, social distancing signage, and other safety controls. When not eating or drinking, individuals will be required to wear a mask/face covering in all areas, including dining spaces, on campus.

CAMPUS STORES

Campus Stores will be closed to the public for the summer sessions. Vending machines for snacks, drinks, and limited school supplies will be available and serviced throughout the summer.

IMPORTANT CONTACT INFORMATION

Campus Police

For emergencies, call **401-825-2000**

For non-emergencies:

Knight Campus

401-825-2109

Liston Campus

401-455-6050

Flanagan Campus

401-333-7035

Newport County Campus

401-851-1620