

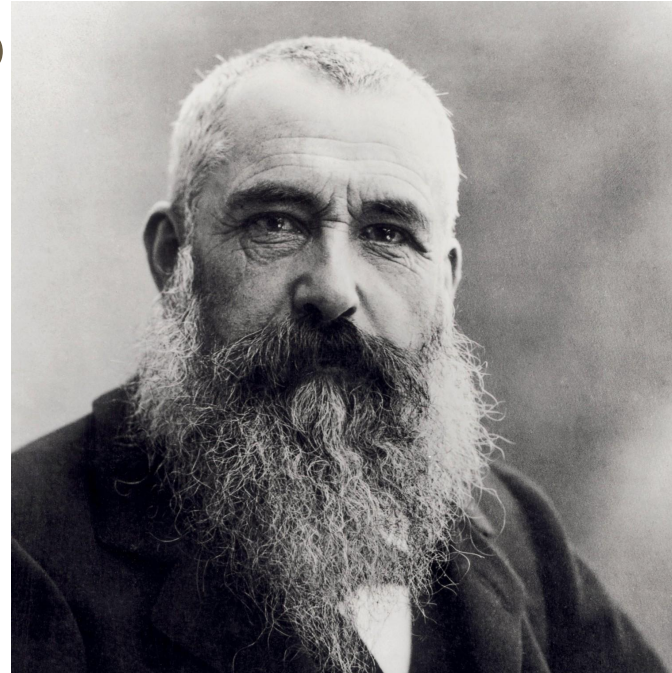


THE LIFE OF MONNET

GENEVIÈVE

CLAUDE MONET

- ❖ Monet was born 14 November 1840 in Rue Laffitte, Paris, France.
- ❖ He was a french painter



"I perhaps owe having become a painter to flowers."

THE EARLY YEARS

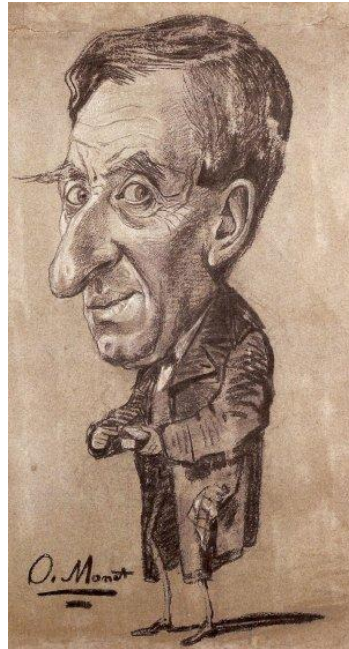
- ❖ Monet's father, Adolphe, was a businessman for his family's business
- ❖ His mother, Louise, stayed home and took care of the family.
- ❖ In 1845 they moved to Le Havre.

THE EARLY YEARS...

- ❖ Monet started to enjoy art
- ❖ His father wanted Monet to join the family business
- ❖ His mother passed away and tension with his father grew.

THE EARLY YEARS...

- ❖ Monet realized he had a talent for caricature and began selling his works to family, friends, and well known people in the city.



THE EARLY YEARS...

- ❖ Eugene Boudin was a neighbor of Monet, and also a landscape artist. Monet began to explore more of the natural world in his art. Boudin even introduced Monet to painting outdoors with fresh air.

THE EARLY YEARS...

- ❖ In spring of 1859 Monet was in Paris, living on savings from the caricatures he sold. In the winter he enrolled at Academic Suisse and started to become known in the city.

THE EARLY YEARS...

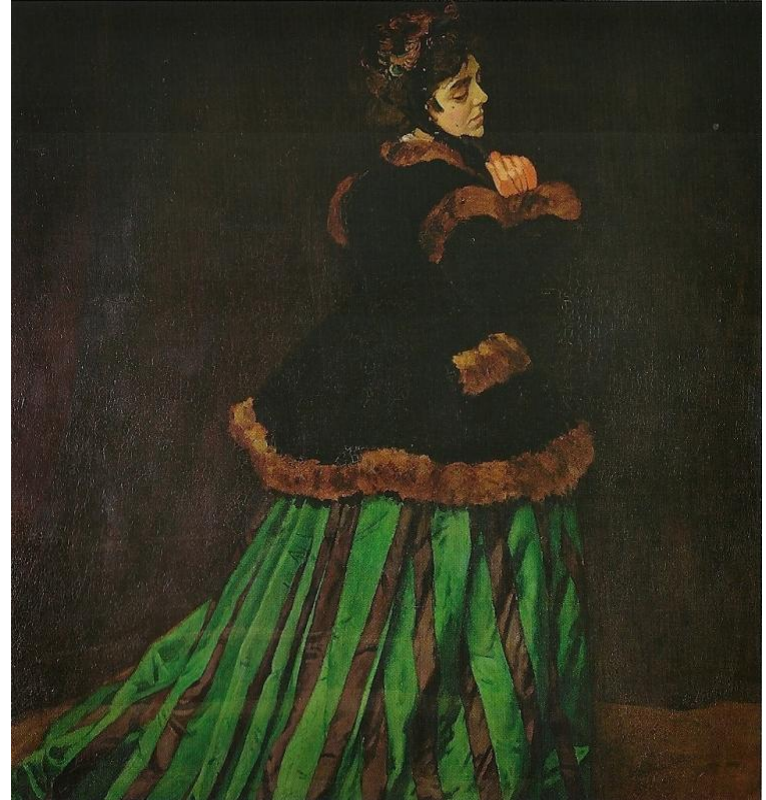
- ❖ In 1861 Monet had to submit his name for military service.
- ❖ His family offered to buy him out, only if he came back home and worked with his father in the family business. He refused and enlisted into Chasseurs d'Afrique for seven years.

THE EARLY YEARS...

- ❖ After a year of serving in Algeria, Monet contracted typhoid and was sent home on extended sick leave
- ❖ His aunt felt as though he had potential in art

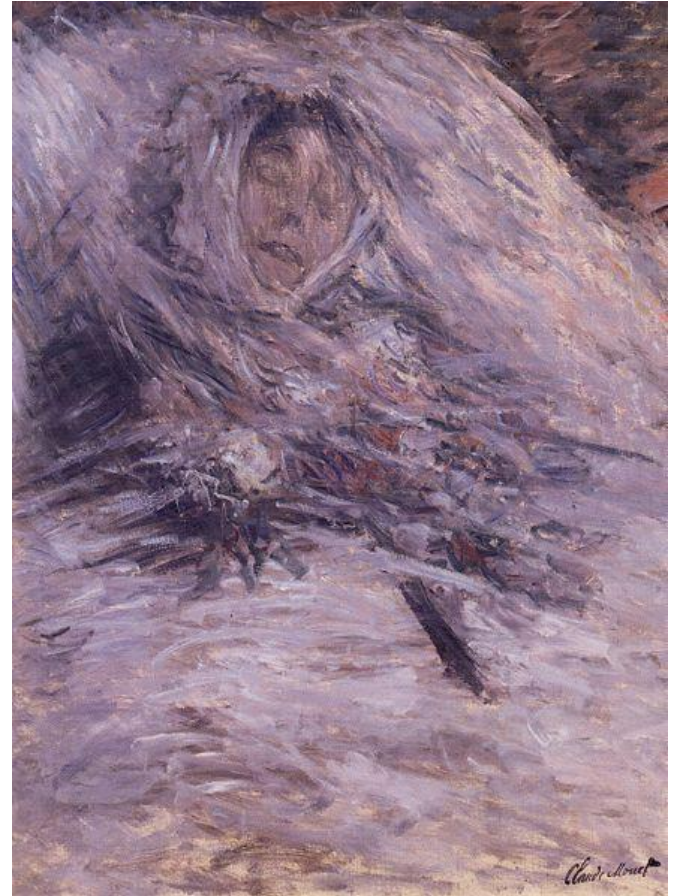
THE EARLY YEARS...

- ❖ In 1866 Monet was selected to participate in the Salon which is an annual juried art show in Paris.
- ❖ Show official picked a portrait called Camille, or The women in the green dress



THE EARLY YEARS...

- ❖ Soon after the birth of their second son, Camille grew very sick, and eventually died. While on her deathbed Monet painted a portrait



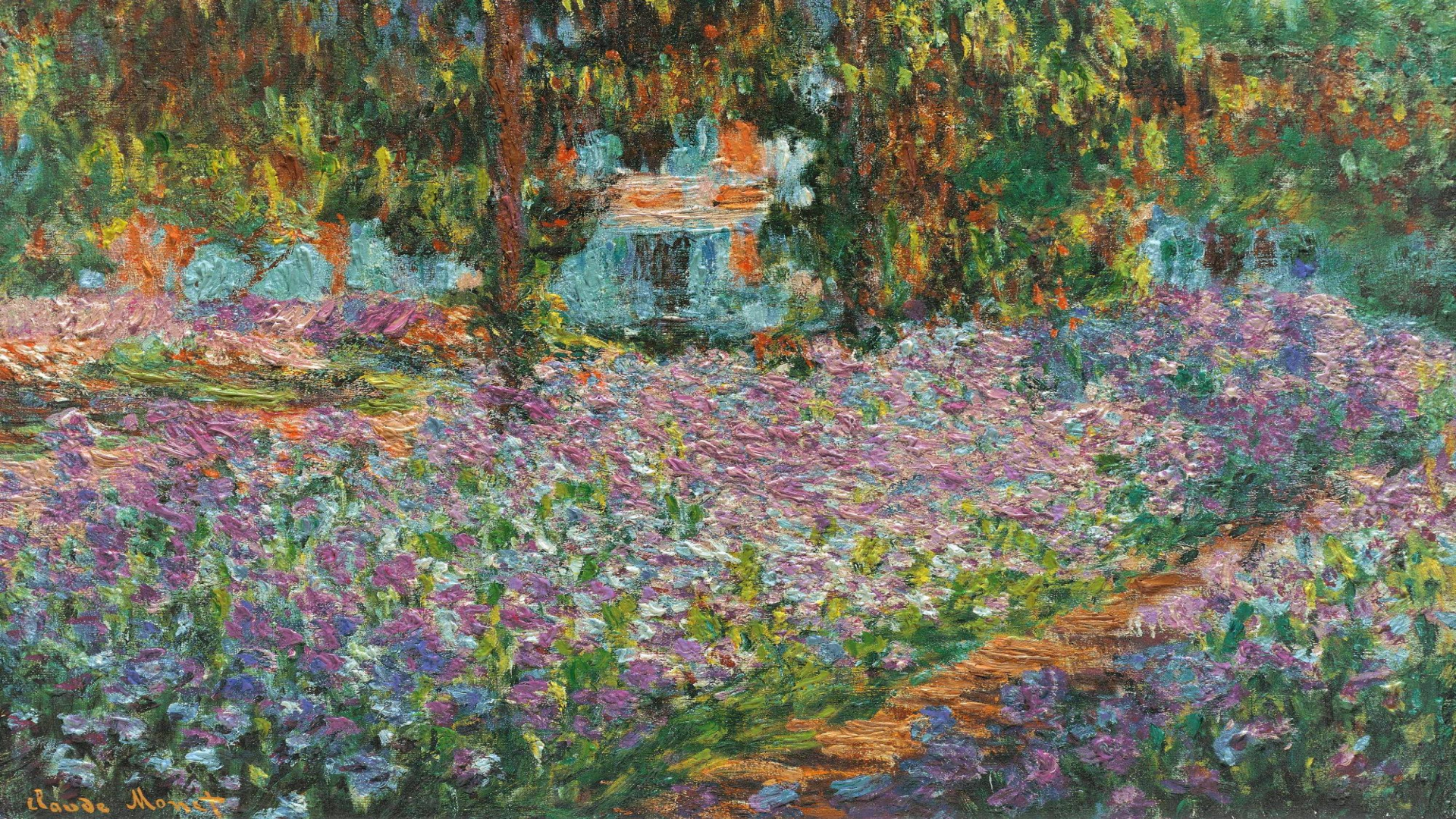
THE EARLY YEARS...

- ❖ Giverny ended up being Monet's final home. Here Monet loved to paint outdoors, and created a lavish garden in his backyard, which would be the inspiration of many of his paintings.

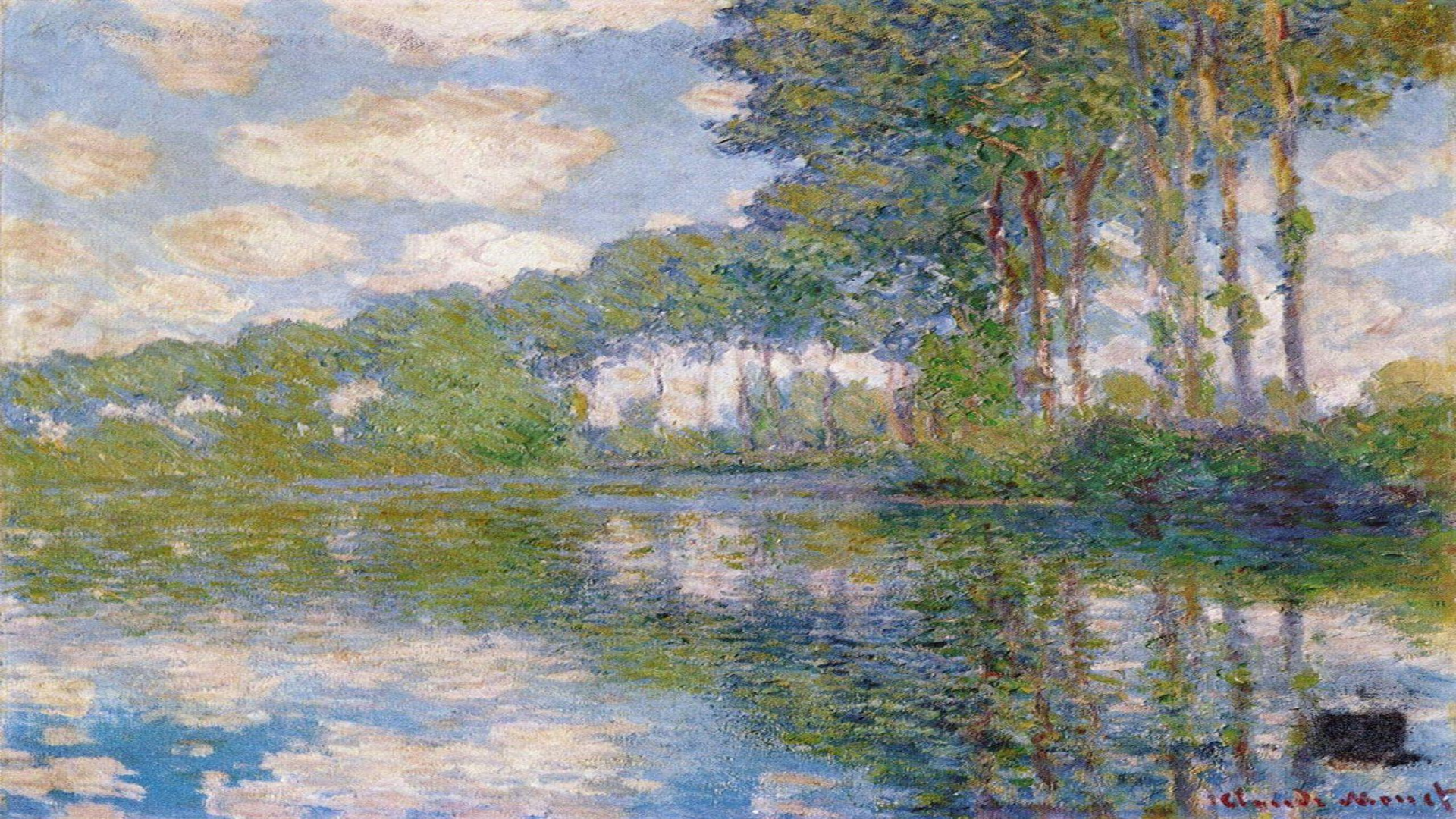


giverny.org

HIS ART



Claude Monet



Claude Monet



Claude Monet

THE LATER YEARS.

- ❖ Monet struggled with depression in his last years. Monet said "Age and chagrin have worn me out. My life has been nothing but a failure, and all that's left for me to do is to destroy my paintings before I disappear." He continued working on art until his last days. Monet died December 5th 1926 at his home in Giverny.



WORKS CITED

About Famous Artists, www.aboutfamousartists.com/index.php/2014/11/woman-in-the-green-dress-by-claude-monet/.

“‘Camille on Her Death Bed’ by Impressionist Claude Monet, 1879.” *SevenPonds Blog*, 22 June 2015,

blog.sevenponds.com/soulful-expressions/camille-on-her-death-bed-by-impressionist-claude-monet-1879.

Editors, Biography.com. “Claude Monet Biography.” *Biography.com*, A&E Networks Television, 2 Apr. 2017,

www.biography.com/people/claude-monet-9411771.

giverny.org. “Claude Monet's Home in Giverny.” *Claude Monet's Garden at Giverny*, giverny.org/monet/home/.

Gordon, Robert, and Andrew Forge. *Monet*. Harry N. Abrams, Inc., New York, 1989.

WORKS CITED

“Io, Claude Monet All'Araldo Mercoledì 15 Febbraio.” *Novara Cinema*, 28 Jan. 2017,

www.novaracinema.it/io-claude-monet-allaraldo-mercoled%C3%AC-15-febbraio.

“Irises in Monet's Garden (1900) : 【光の画家】クロード・モネ (Claude Monet)(克洛德·莫奈)計57作品.” *NAVER* まとめ,

matome.naver.jp/odai/2141673499368055301/2141699754273011703.

“Le Jardin De L'artiste à Giverny.” *Wikipedia*, Wikimedia Foundation, 1 Oct. 2018,

en.wikipedia.org/wiki/Le_Jardin_de_l'artiste_%C3%A0_Giverny.

Monet, Claude. “Self-Portrait with a Beret, 1886 - Claude Monet.” *Www.wikiart.org*, 1 Jan. 1886,

www.wikiart.org/en/claude-monet/self-portrait-with-a-beret-1886.

“Poplars (Monet Series).” *Wikipedia*, Wikimedia Foundation, 4 Oct. 2018, [en.wikipedia.org/wiki/Poplars_\(Monet_series\)](http://en.wikipedia.org/wiki/Poplars_(Monet_series)).

WORKS CITED

“Water Lilies (Monet Series).” *Wikipedia*, Wikimedia Foundation, 3 Nov. 2018, [en.wikipedia.org/wiki/Water_Lilies_\(Monet_series\)](https://en.wikipedia.org/wiki/Water_Lilies_(Monet_series)).

Webb, Poul. “ART & ARTISTS.” *Mimmo Rotella – Décollages Part 1*, 1 Jan. 1970,

poulwebb.blogspot.com/2011/12/luade-monet-caricatures.html.