



## What is PTECH?

In 2016, SENEDIA partnered with the Newport Public School District and the Community College of Rhode Island (CCRI) on a PTECH cybersecurity initiative.

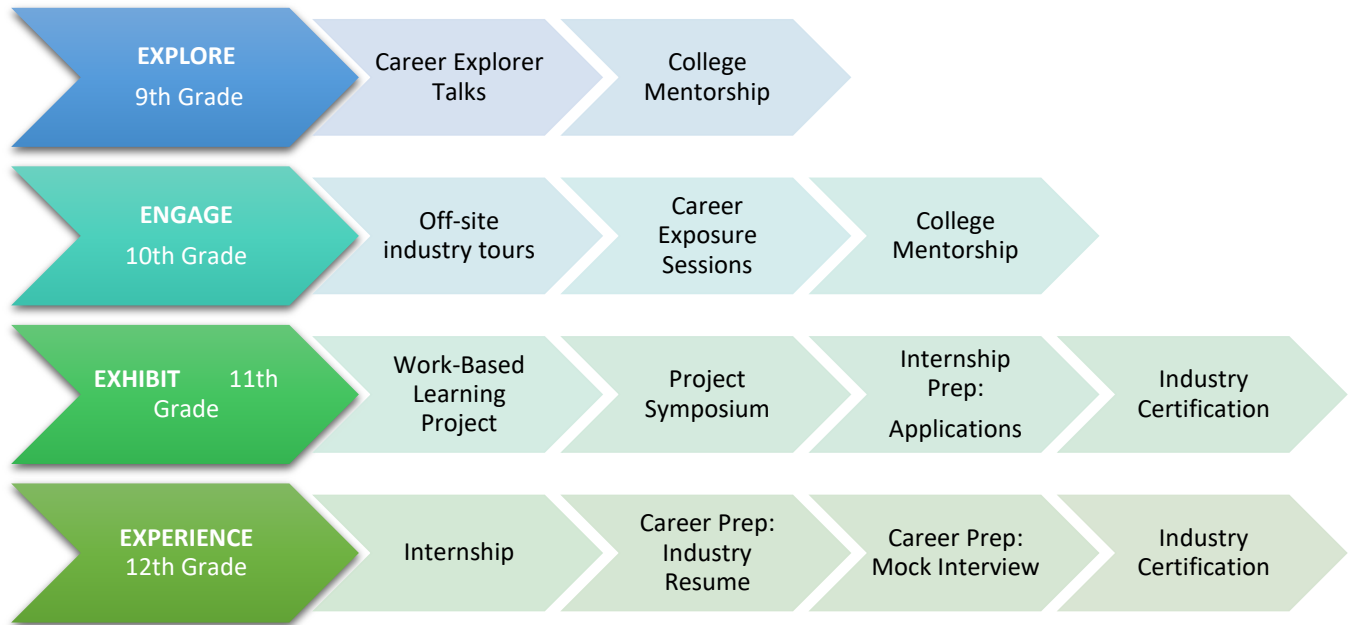
The RI PTECH initiative was also supported by Commerce RI and the Rhode Island Department of Education (RIDE), ensuring alignment with the academic and career and technical education requirements of students, the growth areas of the RI economy, and the workforce needs of RI employers.

Pathways in Technology Early College High School Program, or PTECH, creates a partnership between the high school, the college, and the employer. P-TECH schools are innovative public six-year high school programs, where students can earn their associates degree while simultaneously earning their high school diploma.



## PTECH Newport's Career Exposure Program

A collaboration between industry and academics is a critical element to build our future workforce. In addition to coursework, students enrolled are exposed to industry through program offerings each year that they are enrolled.



## How can industry get involved?

SENEDIA is looking for industry partners to sign up to participate in one or more of the following program offerings for this school year. Companies can sign up in advance and we will work around your schedule to determine the best time to participate!

Career Explorer Talks: Discuss career, company, pre-submitted Q&A for a broader audience of students who are just beginning their studies in the field.



On-Site Career Exposure Sessions: Work with a smaller group of students, provides a more detailed opportunity to discuss the job, requirements, and behind the scenes insight.



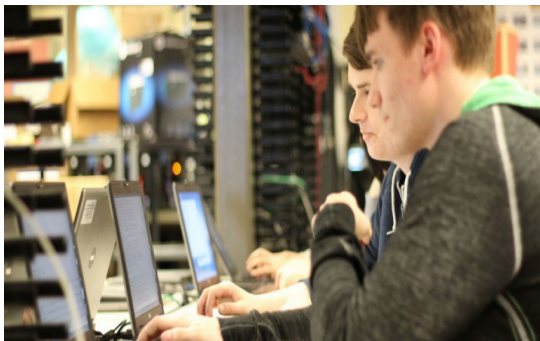
Off-Site Industry Tours: Students go off-campus to visit an industry site for a tour of the building, brief presentation and/or opportunity to engage in hands-on learning with professionals.



Work-Based Learning Project: A collaboration between industry and PTECH instructor to develop a project based on industry's current needs. Students will engage in the project (initiated by industry) throughout the year, with checkpoints embedded in to solicit feedback and progress monitor project success. Culminates at the end of the year with a symposium displaying the projects.



Internship: Industry partners host interns for a paid, 80-hour internship (funded by Real Jobs RI grant) either summer of the student's senior year OR during the school year (co-op model). Interns will engage in a rigorous application process during their junior year to secure an industry internship.



If you are interested in supporting the Career Exposure program at PTECH, please contact Cassandra Johns, Director of Education & Career Pathways, at [Cjohns@Senedia.org](mailto:Cjohns@Senedia.org)