

Annual Report of the CCRI Foundation and the Alumni Association  
July 1, 2010 – June 30, 2011

Change your life.  
*Achieve your dreams.*



Knight Campus, Warwick • Flanagan Campus, Lincoln  
Liston Campus, Providence • Newport County Campus, Newport

**OFFICE OF INSTITUTIONAL ADVANCEMENT**

1762 Louisquisset Pike  
Lincoln, Rhode Island 02865-4585  
Telephone: 401-333-7150  
Facsimile: 401-333-7111  
[www.ccri.edu/oia](http://www.ccri.edu/oia)

# empowering future leaders



IMPACT ENCOURAGE INSPIRE TRANSFORM

CCRI Foundation and the  
Alumni Association  
**2011 ANNUAL REPORT**





## A message from the President

Empower is a strong word, but words alone cannot possibly communicate the influence the Community College of Rhode Island has on this state. With 18,000 students, 57,000 alumni and 1,200 faculty and staff, CCRI is changing lives in the classroom and preparing students for employment across Rhode Island's work force.

CCRI students are diverse in age, culture and experience, and many are the first in their families to attend college. They leave CCRI prepared to transfer to four-year colleges and universities or complete career-oriented programs, that can lead to immediate employment in technical fields.

CCRI is empowering the state's work force. Nearly 90 percent of CCRI alumni remain in Rhode Island after graduation, contributing to the state's economy. Our graduates are nurses, lawyers, teachers, accountants, dental hygienists, small business owners, police officers and artists. Responding to a workforce need, the college graduated its first class of opticianry students this year.

Donors like you are critical to the impact CCRI has on Rhode Island. There are so many CCRI students who flourish because of your generosity. Students who receive financial assistance in the form of scholarships, funds and awards through the Foundation and Alumni Association are making a difference, including some of this year's graduates: Jael Acevedo, an immigrant from the Dominican Republic who is continuing her business studies with the goal of becoming a certified public accountant; Paris Fisher, the first member of his family to attend college, who started a program for youth; and Heather Kumar, a biomedical engineering student who plans to attend medical school. Many other students who are featured in this report are also making a difference because of you.

John F. Kennedy once said, "As we express our gratitude, we must never forget that the highest appreciation is not to utter words, but to live by them." Thank you for your support of CCRI as we strive to change the lives of our students each day to create a better future for Rhode Island. We are proud of the work we do, which you help make possible.



Ray Di Pasquale, President

empower



Change your life.  
Achieve your dreams.

## A MESSAGE FROM THE President of the CCRI Foundation



As the growth in enrollment shows, more students are turning to CCRI as a resource to help them transform their lives and achieve their dreams. But Rhode Island's financial challenges mean that the need for outside support for the college's activities is greater than ever. As the regional and national economies continue along the long road to recovery, the state's funding for higher education has been cut dramatically, leaving fewer resources for the college to support increasing enrollment and creating a greater financial burden for students.

To help fill the gap, the Foundation is in the process of revising its structure, message and expectations to make a significantly higher contribution to the ultimate goal of sustained student success. We will continue to raise money as usual for scholarships, the Student Aid for Financial Emergencies Fund (SAFE), the Annual Fund and through special events such as the Changing Lives Celebration. We also will work with the college to identify larger-scale causes and projects that need additional financial support, and will increase our sphere of influence and awareness to include community leaders, groups and industries that benefit most from CCRI's contribution to the state. By raising the bar for success, we hope to generate more excitement, energy and fundraising for CCRI from the Foundation's activities.

None of these changes will be accomplished overnight. But the awareness and importance of CCRI's position as an agent of change in Rhode Island is greater now than it ever has been. The Foundation is confident that, with the help of new and old friends alike, we can make a meaningful difference in transforming the lives of the college's students. We thank you, as always, for your generous and continued support. — *Mark Gim*

## A MESSAGE FROM THE President of the Alumni Association



The Community College of Rhode Island Alumni Association is a strong community of alumni and friends dedicated to serving the college, its students and graduates. What distinguishes our group of 57,000 members is not only our shared CCRI experience, but also what makes us unique as individuals. In other words, the people of our community are what make the Alumni Association special.

From one of our newest board members who is a tireless volunteer to the talented students we have on our campuses to our alumni having an impact on their communities worldwide, the story of CCRI's 47-year history is the collective story of our people.

Taking stock of the Alumni Association's accomplishments in 2010-11, we have much to be proud of. Through our annual golf tournament and other events and activities, we have raised funds for student scholarships. Our book award program, which provides \$250 awards to deserving students for textbooks and supplies, has expanded. In short, we are making an impact.

American activist Marian Wright Edelman said, "Education is for improving the lives of others and for leaving your community and world better than you found it." Your support, which you demonstrate by volunteering, making a financial contribution or participating in one of the several events offered throughout the year, helps make education accessible to hundreds of students.

Our work is rewarding and our mission is vital to the continuing growth of the college. Together we can continue to influence the future of our alma mater and build a legacy for future generations of CCRI students. Thank you for your support. — *Joshua Klemp '04*

# encourage



## Former trustee supports nursing students through book scholarship

After 20 years as a licensed practical nurse – minus a few years off to raise her family – Deborah Magno came to the Community College of Rhode Island to become a registered nurse (RN) and advance her career.

“At first I came because of finances,” she said, “but since then I’ve learned that this is a really good school that prepares people well.”

Magno works in a nursing home, and treating patients there who are at the end of their lives inspired her to work in hospice care, which requires RN certification.

“I want to provide the end-of-life comfort that people need,” she said. “I want to do something to make people feel more comfortable.”

During her last two semesters in the Nursing program, Magno received financial help from the Leonard DiLorenzo Book Scholarship for Nursing Students. “It paid for all of my books that I needed and I was able to get a laptop. I was very grateful to receive it.”

DiLorenzo contributed a scholarship to the college years after he spent 12 years on the CCRI Foundation Board of Trustees. He is not a CCRI graduate, but “I’ve learned after 40 years in the state that CCRI is a major component of our workforce development,” he said.

He chose to give to nursing students because he is a retired executive of a medical products company and worked often with doctors and nurses.

“Funding a book scholarship for a future nurse seemed to be the right thing to do,” he said.



LEN DILorenzo

Change your life.  
Achieve your dreams.

**DEBORAH MAGNO**  
Nursing major, recipient of the Leonard DiLorenzo Book Scholarship for Nursing Students

## Changing Lives Celebration honors Reed, Winters and Honeywell

### SPONSORS

Amica Mutual Insurance Co.  
BankNewport  
Paul Brooks and Charles Sullivan †  
Constance Evrard  
W.W. Grainger Inc.  
Lifespan  
Newport Financial Associates  
Charles Sullivan Fund for the Arts and Humanities  
Vision Strategies  
The Washington Trust Co.

The Community College of Rhode Island Foundation honors individuals and business partners who have championed the college and its mission to help students change their lives and achieve their dreams during its annual Changing Lives Celebration.

The 2010 event, held on Oct. 21 at the Liston Campus, honored U.S. Sen. Jack Reed as the college's Community Champion, Honeywell as Business Champion and philanthropist Roberta Jenkins Winters as Education Champion.

CCRI President Ray Di Pasquale called Reed, who has directed hundreds of millions of dollars to Rhode Island's economy, infrastructure and public education during his career, "Our eyes, our ears and our voice in Washington."

During an acceptance speech for his award, Reed said, "Higher education is the great engine that drives this country, but it has to be the goal of all of us to help out."

It is not just individuals who help CCRI with its mission, as Honeywell demonstrates. The company has had a relationship with the college for more than 40 years, starting with the installation of heating controls at CCRI's Knight Campus in Warwick. Honeywell's commitment to the college has grown since then and the company is a regular sponsor of the CCRI Fall Classic, a scholarship fundraiser.

Honored in the category of Education Champion was Roberta Jenkins Winters, an avid fundraiser for the community college. When her son, Jonathan, passed away at age 31, she decided to honor his memory by establishing a scholarship. Today, the Jonathan Fund is worth more than \$85,000.

One of the students helped by the Jonathan Fund was in attendance at the event. Nursing major Tessa Constant, who is now an honorary CCRI Student Ambassador and the student representative on the Board of Governors for Higher Education, applied for the scholarship when she did not think she would be able to return to CCRI for another semester.

"Receiving that scholarship made me see that there's hope; it gave me the confidence to apply for the Student Ambassadors and the Board of Governors position," Constant said. "I think winning that scholarship was a turning point. If they picked me, anything was possible."





# inspire

## A shared passion for cars connects student and alumnus

Like many CCRI students, Erik Archambault of Woonsocket works full time to pay for his tuition and takes as many classes as he can.

His burden has been reduced in the Fall 2011 semester because he was awarded the Bob and Barbara Rinaldi Scholarship in Memory of Family and Friends, given to an engineering student each year.

Archambault will use the scholarship to help pay his tuition. "I work full-time but money can be tight and it really reduced the stress on me this semester," he said. "I'm definitely appreciative of that and I feel honored to have been selected."

Archambault is an engineering major who has been attending CCRI since 2009. He hopes to transfer to the University of Rhode Island in the fall or spring of 2012. "My passion is cars and the automotive field," he said. "It would be great if I could design cars or work with alternative fuels."

Archambault's interest in cars is shared by Bob Rinaldi '84, the sponsor of his scholarship. Rinaldi worked as a mechanical engineer for a firm that designed race car parts before he became a race team manager for NASCAR.

He said he donates to CCRI so that others may have the opportunity to get started in engineering.

"My career took me down a great path and I don't think it would have happened if I hadn't gone to college," he said, "so I thought I'd pay it back to some young students."



BOB RINALDI '84

Change your life.  
Achieve your dreams.

**ERIK ARCHAMBAULT**  
Engineering major; recipient of the  
Bob and Barbara Rinaldi Scholarship in  
Memory of Family and Friends

## Alumni Association honors four graduates, two volunteers

### SPONSORS

Amica Mutual Insurance Co.  
Breezy Knoll Child Care Center  
GEM Plumbing and Heating Services Inc.  
Anne M. Riccitelli '66  
Taco Inc./The White Family Foundation

Four CCRI alumni were honored for their contributions to the community when they were inducted into the CCRI Alumni Association's Society of the Knights on April 1.

The association inducted: Sen. Hanna M. Gallo '76, '81; George K. Loftus '79, president and CEO of the nonprofit Ocean State Higher Education and Administrative Network (OSHEAN); Richard W. Rose '82, assistant U.S. attorney; and Betty Anne Waters '89.

**Sen. Hanna M. Gallo '76, '81** – Gallo was the first member of her family to attend college and went on to become a Rhode Island state senator and chair of the Senate Commission on Education, as well as a speech-language pathologist in Cranston schools.

**George K. Loftus '79** – Loftus is president and CEO of OSHEAN, the Ocean State Higher Education and Administrative Network, which is a nonprofit consortium of hospitals, state and local government, and higher education institutions that work together to solve technological problems. He has spent his career working in technology; not just for personal gain, but to foster education and economic growth in the state of Rhode Island.

**Richard W. Rose '82** – Following a stint in the U.S. Marine Corps, Rose earned an associate degree from CCRI in 1982. He went on to Rhode Island College and Northeastern University School of Law and is now an assistant U.S. attorney in Rhode Island and an adjunct professor at Roger Williams University School of Law.



### Theologian discusses the 'six pillars of honest politics'

The Rev. John C. Rankin shared his ideas, based on theology, to create a more harmonious political environment for people of all faiths and creeds during "The Six Pillars of Honest Politics: An Affirmation" at the Knight Campus on March 10. The event was sponsored by the CCRI Foundation and the Charles Sullivan Fund for the Arts and Humanities.



### Alumni gather at Bo's Bar and Billiards

CCRI alumni and friends enjoyed an afternoon at Bo's Bar and Billiards sponsored by the CCRI Alumni Association on Sept. 23. Attendees came together for food and drink, a friendly game of pool and caricatures by artist Noa Teplow Juarez.



**Betty Anne Waters '89** – Waters put herself through law school to exonerate her wrongfully imprisoned brother. Since then she has worked to free other wrongfully convicted prisoners with the nonprofit Innocence Project. The story of her quest was made into a Hollywood movie, “Conviction,” starring Hilary Swank.

The Society of the Knights Outstanding Alumni Award is presented to CCRI alumni who have been active as community leaders, attained personal and professional success, provided volunteer service to the college community and have brought honor upon themselves and the college. The Alumni Association also recognized Mary K. Baker and Jennifer Bramley as honorary alumni.

The awards were presented at Quidnessett Country Club in North Kingstown during an induction ceremony attended by U.S. Rep. David Cicilline and

state Sens. M. Teresa Paiva Weed, Beatrice Lanzi, Erin Lynch, Edward O’Neill, Rhoda Perry, Dominick Ruggerio and V. Susan Sosnowski.

Since 1999, the college has inducted 43 of its alumni into the Society of the Knights. An induction ceremony for honorees is held every other year at a gala fundraising event. Event proceeds are used to provide support for CCRI students in the form of scholarships, funding for text books and event sponsorships.

**Expert reveals how our health depends on nature**

Dr. Eric Chivian, founder and director of the Center for Health and the Global Environment at Harvard Medical School and a recipient of the Nobel Peace Prize, addressed a crowd of 700 during a presentation at CCRI on April 21. Called “How Our Health Depends on Nature,” Chivian’s presentation focused on how biodiversity loss can affect the outbreak and spread of infectious disease. The event was sponsored by the Foundation and the Biology Department.



**Foundation, Alumni Association celebrate major donors**

New trustees and board members were elected and finance reports were presented during the annual meeting of the CCRI Foundation and Alumni Association held at the Knight Campus in Warwick on Sept. 8. After the meeting, trustees and board members attended a reception honoring the college’s major donors. For a roster of Foundation and Alumni Association members, see Page 19.



## Why I give to CCRI



### THOMAS D. SEPE

As a former president of CCRI and then a member of its faculty, Thomas Sepe has seen many students who were struggling to do college-level work. To encourage them, he chose to sponsor a scholarship for students who make progress in their student success or college success courses.

The \$200 award, which can be used at any CCRI bookstore, goes not necessarily to the student with the highest grades, but to the one who has made the most progress, as determined by faculty members. "The idea is that they will get a concrete financial reward for their behavior in succeeding," Sepe said.

The scholarship was created six years ago by members of the CCRI Foundation and Sepe said it has had several contributors. He was inspired to contribute because of his experience in the classroom.

"Most of the time I taught some students who came to college under-prepared, so it seemed appropriate to target the scholarship to that same

population," he said. "I think the college is a gateway, and for some the gate is harder to open than for others. My belief is that we have to keep that gate open for everybody and hopefully this scholarship will support some students who might have a hard time getting here."

### LELA MORGAN

In her job as vice president for Academic Affairs of the Community College of Rhode Island, Lela Morgan helps oversee the college's faculty and staff and makes sure they are able to carry out their roles.

As a member of the CCRI community, she is concerned about the well being of the college's students and recently created a scholarship to help those with financial need.

Morgan established the Roberson-Lee Scholarship in May in memory of her sister, Elizabeth "Betty Lee" Roberson, and her brother, Donald T. Lee.

To apply for the scholarship, students must have completed one year at CCRI and be in need of financial assistance to further their

studies. They can be of any age, studying in any academic program and must write an essay on career and personal goals. This open-ended scholarship will assist a diverse population of students.

"Someone helped me when I was attending college and this [scholarship] is one of the ways that I am trying to give back to help students become successful," Morgan said.

The scholarship is a natural extension of Morgan's work in education. She has been with the college for more than 40 years, starting as the program director for the Clinical Laboratory Technology program and then serving as the chairwoman for the Allied Health Department.

Outside of the college, Morgan is a member of many philanthropic and community groups, including the Rhode Island Commission on Women, the Urban League Guild, the John Hope Settlement House and the NAACP.



### 2010 Fall Classic

Sponsors, golfers and contributors rose to the challenge at the 16th Annual CCRI Fall Classic, which raised \$28,000 for student financial support in a tournament held at the Warwick Country Club on Sept. 20. A reception concluding the event was held in the Warwick Country Club dining room, where stories of golfing prowess were traded between bites of hors d'oeuvres, pasta, desserts and beverages. More than \$2,000 was raised in a spirited auction conducted by President Ray Di Pasquale, and golfers offered up an additional \$4,000 for dozens of silent auction and raffle items.



### SPONSORS

Adler, Pollock and Sheehan P. C.  
Ameresco  
Honeywell  
Independent Insurance Agents  
of Rhode Island  
Pare Corp.

## CCRI Foundation and Alumni Association scholarships, funds and awards

*The Foundation and Alumni Association awarded more than \$91,000 to 138 students to help pay for their tuition, books and fees last year. The following is a list of donor-sponsored scholarships, funds and awards the college annually grants to eligible students:*

A. C. Besette Scholarship	Davol's Norm Brown Memorial Fund	President Thomas D. Sepe Book Scholarship
Administrative Office Technology Department Scholarship	Deborah Y. Griffin Vocal Arts Scholarship	Prybyla National Guard Scholarship
Ahlijian-Pitts Scholarship	Dental Hygiene Faculty Award	Radiography Scholarship
Albert E. Carlotti Dental Hygiene Scholarship	Dezsoe Halmi Memorial Scholarship	Ray M. Di Pasquale Academic and Community Service Scholarship
Andrew and Mary Conroy Scholarship	Dollars for Scholars Scholarship	Roberson-Lee Scholarship
Anthony and Lillian J. Masi Scholarship	Domenic DiLuglio Scholarship	Robert A. Silvestre Scholarship
Arthur Chatfield Music Scholarship	Edward and Lucy D. Medeiros Scholarship	Robert F. Dalton English Scholarship
Barbara M. Colavecchio Transfer Scholarship	Edward J. Liston Scholarship	Rosemary Sullivan Zins Honorary Scholarship
Bob and Barbara Rinaldi Scholarship in Memory of Family and Friends	F. C. Tanner/Federal Products Employee Scholarship	Society of Governmental Accountants and Auditors Scholarship
Bobby Hackett Jazz Scholarship	Ferla-Pohle Scholarship	Solomon A. Solomon Business/Retail Scholarship
Carosi/SkillsUSA Scholarship	Ferland and DiMaria Student Assistance Scholarship	St. Dunstan's/Access Scholarship
CCRI Alumni Association Scholarship	Frank A. Orth Scholarship	Stephen Flaherty DECA Scholarship
CCRI Alumni Association Book Award	Hope Branch of the International Sunshine Society	Student Nurse Organization Scholarship
Charles Sullivan Scholarship for Women Returning to College	Iannuccilli Family Radiography Scholarship	Uber-Testa Award
Charlie Wilkes Athletic Award	James Johnson Piano Scholarship	Underhill Dental Hygiene Book Award
Christina M. Liston Scholarship	Jane Thompson Scholarship	Valerie Norbury Memorial Scholarship
Christine Quinn McKenney Scholarship	Janet Lebkuchner Scholarship	Walter and Eileen Jachna Scholarship
Clara Leclerc Philosophy Scholarship	Joan Swedberg Scholarship	Warwick Branch of the International Sunshine Society Scholarship
Cooperative Education Scholarship	Joe Andre Jr. Student-Athlete Scholarship	Woonsocket Kiwanis Scholarship
Daniel J. Garvey Scholarship	John Clarke Scholarship	XRI Scholarship
David J. Bedrosian – Providence Journal-Bulletin Scholarship	John W. Ruscito Scholarship	Yacovone Scholarship for Dental Assisting Students
	Jonathan Fund	Yatsko Scholarship
	Julie White-Gooding and Antonio Gooding Minority Student Opportunity Scholarship	
	Kathleen Dwyer Nursing Scholarship	
	Leonard DiLorenzo Book Scholarship for Nursing Students	
	Liberty Mutual Business Award	
	Lillian J. Masi Scholarship	
	Lloyd S. Kaplan Music Scholarship	
	M. Sue Higgins Scholarship	
	Maria Pacitto Scholarship	
	Mary O'Neill Athletic Award	
	Naylor Memorial Fund	
	Phi Theta Kappa Scholarship	

impact

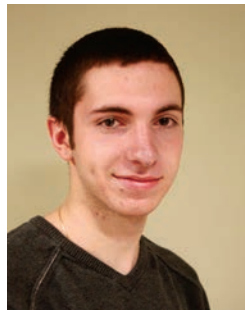
## Students benefit from Alumni Association Book Awards

For students struggling to make ends meet while they attend college, every dollar counts. That is why every semester the Alumni Association gives out book awards, \$250 grants to help students with financial need buy textbooks. Funding for the awards comes from alumni donations and other fundraising efforts, including the annual golf tournament. The following are comments from some of this year's book award recipients:



"I would like to thank all of you for granting this award to me. Your generosity will help me to continue my education and assist in achieving my goals in the future."

— **Andrea Sabourin**  
*Phlebotomy*



"Receiving this book award has helped me purchase the books and art supplies I need to complete my associate degree and fulfill my dream of transferring to Roger Williams University to study architecture. I am sincerely grateful for this generous gift."

— **Christian Scungio**  
*General Studies*



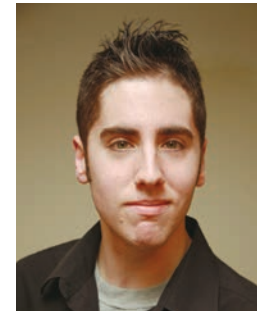
"As a career-changer and a single mother of two teenagers, attending college has been met with great determination, but also with great financial strain. I am a hard-working 'A' student and receiving this award makes a notable difference for my family."

— **Carolyn Frangos**  
*General Studies/Nursing*



"A goal, a dream and a desire can never be accomplished without the help of others. And your help will contribute to my success. As some people say, 'Every little help counts,' but this one counts more than anything because it came at a time when I really needed help."

— **Moumy Diop**  
*Nursing*



"When I graduate from CCRI, I plan to use my independently owned business to spread nutrition, health and wellness initiatives to the community. Thank you for helping me to prepare for this next step in my future."

— **Josh Southworth**  
*Entrepreneurship certificate*

### Faculty participate in professional development workshop

CCRI's Center for Innovative Teaching, Learning and Assessment, which provides resources to enhance teaching and learning practices at the college, hosted Dr. Donald Buckley, a biology professor at Quinnipiac University, during a workshop for faculty and staff on Feb. 25. Buckley discussed "How People Learn" through cognition, memory and inquiry during this Foundation-sponsored session.



### Betty Anne Waters '89 shares journey of exoneration

CCRI alumna Betty Anne Waters shared her incredible journey to free her wrongfully incarcerated brother – a story that was the basis for the movie "Conviction," starring Hilary Swank – during a Foundation-sponsored visit to her alma mater on April 14 during All College Week. In 1983, Waters' brother was falsely convicted for murder and in 2001, having put herself through college and law school to become his attorney, she set him free.



## Community college inspires love of learning in Ken Fuller '66

Ken Fuller '66 has donated annually to the Community College of Rhode Island's Alumni Annual Fund for about 20 years, ever since he paid off his student loans. He gives because of all that the college gave him.

"[Rhode Island Junior College] was one of the two or three turning points in my life," he said. "I had a very poor high school performance, got into the junior college by the skin of my teeth and I ended up on Wall Street."

Fuller was in RIJC's first graduating class and found a vibrant faculty that got him excited to learn.

"I think the college was extremely fortunate, for a school that was just starting its first year, to recruit the quality of staff that it did," he said.

Fuller remembers professor A. Curtis Bessette, a retired naval officer known to students as Commander Bessette who taught politics, telling him that the Berlin Wall would fall during his lifetime. He remembers Rita Lepper of the Art Department, whom he credits for every inspiring moment he has spent in an art gallery, and Dr. David Freeman, who exposed Fuller to philosophy for the first time.

Fuller said the college gave him a second chance after high school, and he believes it has offered the same to many students since.



"It was a great experience and I am extremely proud to have been part of the first class of a college that has affected so many lives since," he said.

After RIJC, Fuller briefly attended the University of Rhode Island, served in the Vietnam War and attended Temple University and Columbia University. He has spent his career as a portfolio manager at a money management firm in New York City.

Fuller said that, with all he has accomplished in his life, CCRI is one of the organizations he has been most proud to be a part of.

"It was a remarkable time in my life," he said, "and one of the best times."

transform

### Alumni Association Golf Tournament

The Community College of Rhode Island Alumni Association raised more than \$15,500 for student assistance programs through its ninth annual golf tournament held at the North Kingstown Golf Course on June 15. More than 130 golfers participated. Proceeds from the tournament directly benefit students with financial need through tuition assistance and emergency funds for college expenses as well as money to buy textbooks and supplies. The event concluded with a raffle and an auction with prizes provided by 24 companies and individuals.



#### SPONSORS

Ameresco  
Celtic Energy  
DiGennaro & Palumbo LLP  
Honeywell LLC  
J. Arthur Trudeau Memorial Center  
The Washington Trust Co.

## Community College of Rhode Island Foundation

Revenue Report (Cash Basis)  
July 1, 2010 – June 30, 2011

Gifts In-Kind	\$7,700
Individuals	\$192,804
Business/Corporate/Not for Profit	\$200,928
Investment Income	\$372,842
<b>Total</b>	<b>\$774,274</b>



### Alumni Association hosts after-hours networking event

Approximately two dozen CCRI alumni and friends attended the Alumni Association's after-hours networking event at DUSK in Providence on Dec. 1. Good times and good food were shared by all. Former Alumni Association President Sondra Pitts '66 won the Monster Golf raffle prize.



### Robotics expert enlightens students

Andrew "Dr. ZoZ" Brooks, an electrical engineer and computer scientist who has shared his work in robotics on the Discovery Channel television shows "Prototype This" and "Time Warp," told stories of his scientific adventures and work on television during the annual CCRI Honors Forum, sponsored by the Foundation, on May 3.



**Thank you.** The college would like to thank its friends who provided support through their donations of time, talent or treasure that provided important budgetary relief to CCRI, the Foundation and the Alumni Association.

*The CCRI Foundation and Alumni Association have made every effort to ensure the accuracy of this list.*

*Please contact us at 401-333-7150 to report any errors or omissions, as we would like the opportunity to make corrections.*

**PRESIDENT'S CRUSADER COUNCIL**

*The following members have donated more than \$1,000 annually for three consecutive years.*

- Deborah J. Aiken '75, '82 and Thomas D. Sepe
- Gregory M. Ahlijian
- Ronald J. Caniglia '09 (H)
- Marguerette N. Hosbach and Gerald P. Conroy '74
- Kimberly Crealey-Rouillier
- Frieda H. Dengal
- Ray M. Di Pasquale
- Kenneth G. Fuller '66
- Helen S. '85 and Joseph R. Garvey
- Mark K. W. Gim
- Eileen J. and Walter P. Jachna '98
- Marjorie H. Martiesian '66
- Caroline S. Miller
- Charles F. Miller '89
- Virginia J. Magnan '85 and David P. Monti '72
- Lela and Jerry Morgan
- Glenda M. Morrison '87
- Sondra V. '66 and Thomas E. Pitts Jr. '07 (H)

- Richard A. Pray '82
- Richard Swearingen
- Marianne and Jack Renza
- Solomon A. Solomon '03 (H)
- Julie M. White-Gooding '09 (H)
- Arthur A. Yatsko

**JOHN H. CHAFEE SOCIETY**

*Estate and Planned Giving*

- Richard J. Brito '76
- Paul M. Brooks
- Marjorie Crook†
- Frieda H. Dengal
- Ray M. Di Pasquale
- Leonard A. DiLorenzo
- Kathleen F. Dwyer
- Constance F. Evrard
- Robert K. Holden
- Janice S. Howard
- Walter P. Jachna '98
- Eileen J. Jachna
- Margaret M. Jacoby
- Mabel A. Kelly
- Edward J. Liston
- Judith H. Liston
- Anthony Masi
- Inez M. Mello '87
- Edith and Joseph W. Menard
- Charles F. Miller '89
- Mary and Henry Nardone
- Sondra V. '66 and Thomas E. Pitts Jr. '07 (H)

**PRESIDENTIAL \$10,000+**

- Amica Mutual Insurance Co.
- Roberta Jenkins Winters
- National Grid
- Sondra V. '66 and Thomas E. Pitts Jr. '07 (H)
- Primary Flow Signal Inc.

**LISTON SOCIETY \$5,000 – \$9,999**

- Gregory M. Ahlijian
- Ameresco Inc.
- Kenneth G. Fuller '66
- Honeywell Inc.
- Independent Insurance Agents of Rhode Island
- Lifespan
- Verizon

**FLANAGAN SOCIETY \$2,500 – \$4,999**

- Adler Pollock & Sheehan P.C.
- Ronald J. Caniglia '09 (H)
- CCRI Student Government
- Ray M. Di Pasquale
- Annamarie P. Garceau and Leonard A. DiLorenzo
- Constance F. Evrard
- Helen S. '85 and Joseph R. Garvey
- GEM Plumbing and Heating Services Inc.
- Mark K. W. Gim
- William S. Hamilton Fund
- Pare Corp.
- William N. Place
- Marianne and Jack Renza
- Ellen C. Retlev
- Rotary Club of East Greenwich
- Stand Corp.



- Taco Inc.
- W. W. Grainger Inc.
- The Washington Trust Co.
- The White Family Foundation

**KNIGHT SOCIETY \$1,000 – \$2,499**

- Deborah J. Aiken '75, '82 and Thomas D. Sepe
- Bard Davol Inc.
- Mary Benton and Louis Fuchs
- Beta Group Inc.
- John L. Booth II
- Breezy Knoll Child Care Center
- Paul M. Brooks
- CCRI Athletics
- CCRI Music Department
- Celtic Energy
- Charles Sullivan Fund for the Arts and Humanities
- Joseph A. Chazan, MD
- Citizens Bank
- Marguerette N. Hosbach and Gerald P. Conroy '74
- Kimberly Crealey-Rouillier



Marjorie Crook†  
 Vincent A. Cullen  
 Frieda H. Dengal  
 DiGennaro & Palumbo LLP  
 Richard V. DiGennaro,  
 CPA '79  
 Phyllis and  
 Joseph P. DiMaria '04 (H)  
 Raymond A. Ferland  
 Gilbane Building Co.  
 Greater Providence  
 Chamber of Commerce  
 Lynn M. '03 '10 and  
 Dezi G. Halmi  
 IKON Office Solutions Inc.  
 J. Arthur Trudeau Memorial  
 Center  
 Eileen J. and  
 Walter P. Jachna '98  
 Judith E. '99 and  
 Raymond J. Maccarone '67  
 Marjorie H. Martiesian '66  
 Caroline S. Miller  
 Charles F. Miller '89  
 Virginia J. Magnan '85 and  
 David P. Monti '72  
 Moore Media Inc.  
 Lela and Jerry Morgan  
 Glenda M. Morrison '87  
 NAMI Attleboro Inc.  
 Jack A. Napolitano '71  
 Next Generation Vending  
 Food Services

OSHEAN Inc.  
 Richard A. Pray '82  
 Residential Properties Ltd.  
 RI Council for the Humanities  
 Anne M. Riccitelli '66  
 Daniel J. Ryan  
 Marianne G. Ryan '09  
 Cheryl '03 and  
 Ronald L. Schertz  
 Solomon A. Solomon '03 (H)  
 Sullivan & Co.  
 Richard Swearingen  
 Myrth York and  
 David B. Green

**PLATINUM SOCIETY**  
**\$500 – \$999**

Marisa Albini and  
 Michael F. Basileo  
 Lisa Andoscia  
 Gail A. '77 and  
 Michael A. Archetto '75  
 Bank of America  
 Blarney Stone Energy LLC  
 Robert D. Cipolla '83  
 Coca Cola Refreshments  
 Susan R. '89 and  
 Emilio A. Colantonio  
 Cox Communications  
 Leigh A. Martin '90 and  
 Albert J. Crisfield  
 Christophe De Menil  
 DiSanto, Priest & Co.  
 Engineering Design Service  
 Andrew M. Erickson  
 Sandra Finerty  
 Joseph T. Fleming '74  
 GFWC Warwick  
 Women's Club  
 Robyn K. Greene  
 Elaine Gurian  
 John I. Howell Jr.  
 Integrated Financial Partners  
 Richard B. Jaffe  
 Lori L. Lawrence  
 Maureen E. McGarry  
 Nancy McMahon  
 Michael A. Nardone  
 M. Teresa Paiva Weed

Sharon E. and  
 Robert J. Perkins '77  
 Nancy A. Potter  
 PriMedia Inc.  
 RDW Group Inc.  
 Louisa S. Sarofim  
 Cynthia Scott  
 Seconn Insurance Inc.  
 Catherine B. Sloan  
 Robin A. Smith  
 Sandra V. '76, '01 and  
 Richard Sokoll  
 Teresa E. and  
 William E. Squizzero  
 Richard M. Terek, MD  
 Helen A. Valcourt '81  
 Stephen A. Vieira  
 West Valley Inn  
 Julie M. White-Gooding '09 (H)  
 and Antonio E. Gooding  
 Charles R. Wilkes

**GOLD SOCIETY**  
**\$250 – \$499**

A. E. Club  
 A. B. Munroe Dairy Inc.  
 All American Barber Shop  
 Atrion Networking Corp.  
 Mary K. '11 (H) and  
 Donald B. Baker '74  
 Emilie A. Benoit  
 CAM H.V.A.C. &  
 Construction Inc.  
 Martin Camacho  
 Paula A. Cardillo  
 Tosca N. Carpenter  
 Marjorie B. and  
 Robert S. Catanzaro  
 CCRI Alumni Association  
 CCRI Bookstore  
 CCRIPSA  
 City of Newport  
 Lynda F. Codega  
 Manuel Correia  
 Rosemary A. Costigan '78  
 William R. Cote '74

Craft & Trade Employment Inc.  
 Cranston High School East  
 Michael J. Cunningham  
 Therese M. and  
 Paul B. Curran  
 Richard G. Edwards  
 Katharine G. Estes, CPA  
 Louis A. Fazzano  
 Kerri H. Friel  
 Louise E. Gagne '77  
 Hanna M. Gallo '76, '81  
 Kathleen J. Gazzola  
 Chip Greer  
 Cindy L. Hansen '03  
 Kathleen C. Hittner, MD, and  
 Barry G. Hittner  
 Janitech  
 JMY Realty LLC  
 Joe Pel Printing Inc.  
 Lois A. Kalafarski '70  
 Kenvo Floor Co. Inc.  
 Marie J. Langlois  
 Mary Jeanne '90 and  
 Michael R. Latina  
 Jo-Ann Leroux  
 Cathy L. Livingston  
 Alice Loftus  
 Edward A. Madonna  
 Mark A. Male  
 Jane M. '89 and  
 Larry Masso  
 Steven J. Maurano  
 Patricia J. May  
 Kelly A. McDonald  
 Antonia G. McGuire '75  
 Inez M. Mello '87  
 Stacey and Eugene Mihaly  
 Daniel P. Moriarty '73  
 Newport Hospital  
 Mildred T. Nichols  
 Concetta C. Nicolosi  
 Timothy G. Noble  
 John R. O'Leary '75  
 Edna O'Neill Mattson  
 Sandra J. '76 and  
 Kenneth P. Pattie '01  
 Catherine M. Poirier  
 Lisa A. Procter '00  
 Project Book  
 Joanne and John Quinn

R.E.I. Inc.  
 Sheila M. Raposa  
 Larry D. Riggs  
 The Robinson Green  
 Beretta Corp.  
 Louis J. Saccoccio '68  
 Science Applications  
 International Corp.  
 Ann Simmon Woolsey  
 SkillsUSA Rhode Island  
 Smoke Clean of  
 New England Inc.  
 Cheryl A. Suglia  
 Jody J. Sullivan  
 Nancy A. Sullivan  
 Susan M. Symonds  
 Tafuri Electric  
 David Pratt Ward  
 Pamela J. Wood  
 Peter N. Woodberry  
 Steven J. Zaroogian '78  
 Deborah M. Zielinski

**SILVER SOCIETY**  
**\$150 – \$249**

Robert A. Albano  
 Stephen D. Alves '80  
 Lenora J. Apple '96, '02  
 Scott Avedisian  
 Vincent Balasco  
 Deborah L. Blakeney '93  
 Denise R. Bourget '87  
 Paul R. Boutin '79  
 Jennifer Bramley '11 (H)  
 Marion Bramley and  
 Russell Bramley '68  
 Deborah M. Brayton  
 CCRI NEA-FA  
 CCRI Office of Human  
 Resources  
 Centreville Bank  
 Claudia J. Chadwick '74  
 Amy L. Chaves '90  
 Edward Clifton  
 Richard H. Coren  
 Couture Design  
 Associates Inc.  
 Trudy Coxe  
 Creative Digital

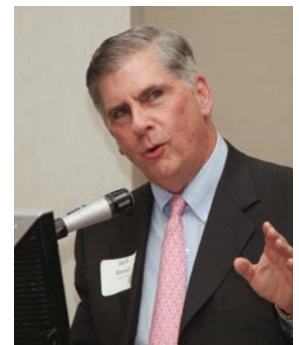
Joanne M. Daly '79  
 Christine D. DeGraide '85  
 Dr. Day Care's Child  
 Development Center  
 ESPA CCRI/NEARI  
 Esten & Richard Agency Inc.  
 Mark C. Fermi '93  
 Helen Allen Fiske  
 Lawrence Gallogly  
 Leonard Gemma  
 James A. Glickman  
 Maureen Grillo  
 Thomas Hamilton  
 Thomas Haynes  
 Monica Horan  
 Catherine W. Johnson  
 Sheila and Lloyd Kaplan  
 Denise L. Lazo  
 William LeBlanc  
 Monica C. Lee '94 and  
 Gerard Brousseau  
 Gary C. Lemery '70  
 Lessing's Food Service  
 Management  
 Judith H. and  
 Edward J. Liston  
 The Little Rhody Press  
 Sylvia Long  
 Robin J. McDuff '98  
 Stephen A. Metcalf  
 Monty J. Monteiro '68  
 Jason P. Moore  
 Navigant Credit Union  
 Marianne M. Needham  
 Geraldine Neto '97  
 Thomas J. O'Malley '95  
 Lisa and Michael Glynn  
 Santo J. Pate  
 Kathleen A. Perry '99  
 Norman L. Proulx  
 Thomas W. Quinlan '96  
 Pamela J. Reo  
 John C. Revens Jr. '66  
 The Savory Grape  
 Linda C. and  
 Joseph P. Sincerny  
 Ramona M. Skelly  
 David A. Snow  
 Ruth A. Sullivan  
 Karen A. Thompson '99  
 W. B. Tillinghast

C. June Tow  
 Margaret L. Walker '71  
 Beverly J. Wiley  
 World Trophies  
 Richard D. Yessian '04  
 Ellen L. Yost

**FRIENDS SOCIETY**  
**\$50 – \$149**

401 Painting  
 AAA Southern New England  
 Richard E. Abel Jr. '83  
 H. Terri Adelman  
 Linda and Robert Afflick  
 Carol A. Agostini '86  
 Diane M. Alba  
 Althea M. Allard  
 Marcia T. Allen  
 Fredrica J. Anderson '79  
 Sheila Andrews '74  
 Carol A. Annarino '78  
 Robert E. Antonson  
 Asia Grille  
 Marilyn E. Asselin '74  
 Jill Aszling and Bill Shek  
 Marjorie L. Ball and  
 Anthony J. DiBella  
 Deborah A. Barrett '76  
 Jack Beauchamp, RNC '80  
 Kathleen M. Beauchene  
 Linda J. Belleville '77  
 Marcel L. Berard  
 Berkshire Place  
 Nursing Home  
 Mary A. Blackmore '82  
 Charles L. Blanchette '94  
 Barbara J. Bogosian '76

Stephanie A. Bolcon '90  
 Cynthia S. Botvin '82  
 Verlaine and Michael Boyd  
 Dale S. Boyle  
 Anne J. Brien '94  
 Elizabeth A. Bruckner '91  
 Joanne B. Burger  
 Bertha and Stephen Burns  
 Christopher Butler  
 Maureen C. Byrne '84  
 Rosemarie Cabral '71  
 Geoffrey R. Canham '97  
 Jeremiah H. Cannon Jr.  
 Robert J. Canulla '69  
 Joyce A. and  
 Richard J. Cardin '66  
 David R. Carlin Jr.  
 Deborah and  
 Robert E. Carr '90  
 Joseph J. Carr '96  
 James A. Carter Jr. '70  
 James R. Carter '73  
 Joseph W. Cavallaro '69  
 CCRI Green Team  
 Loren W. Cheney  
 Cimino Plumbing LLC  
 Thomas R. Coderre '90  
 Jeanne M. Cohen '90  
 Natalie Coletta  
 Pamela J. Coletti '74, '83  
 Elizabeth Colt  
 Leonard B. Colt Jr.  
 Margaret M. Connell '94  
 Eric A. Contre '98  
 Mona R. Coppola '87  
 Kim Corcoran Pepere '81  
 Alan E. Cotnoir '77



Kathleen V. Coupland '83  
 Charles C. D'Arezzo  
 Ruth and James Dealy  
 Claudia DeFaria '94  
 Donna Demello  
 Beth E. DeRestie '73  
 Michael K. Diehl  
 Joseph A. DiMasso  
 Iona and Richard Dobbins  
 Paula A. Domenico  
 Robin M. Donnelly '83  
 Virginia H. Dufort  
 John and Georgine Edwards  
 Dwight H. Emanuelson  
 Melody S. Ennis  
 Kelly D. Enriquez

Amy E. Gabarra  
 Mary O. Gabbidon '94  
 Marisol Garcia  
 Armeather Gibbs '88  
 Dianna B. Glass '92  
 W. Bruce Glass '77  
 Josephine L. † '82 and  
 Laurence J. Godek  
 Cheryl A. Gomes '69  
 The Good Neighbor  
 Alliance Corp.  
 Gordon R. Archibald Inc.  
 Paul Goyette '77  
 Mimi E. Grant '91  
 Norman L. Grant Jr.  
 Lois C. Graydon '73  
 Steven D. Greenfeld '75  
 Linda W. Grenier '90  
 Margot and  
 Richard Grosvenor  
 Eileen Hand Warburton  
 Susan G. Hanke '80  
 Milton P. Hannah  
 Kathleen Hanson '78  
 Sally A. Hay  
 Gary L. Helton Jr. '02  
 Jacqueline '05, '01 and  
 Michael J. Hogan '91  
 Maggie Horan  
 Celia C. Howland '79  
 Sherrill D. Hunnibell  
 Andrea Iannazzi  
 James V. Isherwood  
 Jamie Jaffee and  
 Richard Dana, Ed.D.  
 Diane L. Johnson '75  
 Sandra M. Johnson  
 Joseph P. Calabro Jr., CPA  
 Madalena M. Josephs  
 Noreen Karasinski  
 Mark Keenan  
 Norine J. Keenan '81  
 Karen H. Keim  
 Michael J. Kimes '03  
 Daniel J. King '94  
 Joshua M. Klemp '04  
 Melinda Knight  
 Lawrence J. Kuizema  
 Paula '67 and Bob Lahoud '68  
 Nancy A. Lalli '76

Pamela Wai-Ha Lam '00  
 Patricia A. Lambrou '79  
 John F. Lamoureux '71  
 Leigea G. Landry '81  
 Beatrice A. Lanzi  
 John V. Lanzieri '72  
 Susan LaPanne  
 Dennis G. Latimore '97  
 Edwin F. Leach II  
 Benno Lebkuchner  
 Barbara J. Lemieux '77  
 Joseph L. Lennon  
 Rebecca M. Lennon '92  
 Dennis P. Lima '88  
 Karen L. Lippitt '77  
 Regina M. Livramento '71  
 Dorothy C. Lucas '76  
 Susan M. Lugo  
 Katherine M. Lukas '95  
 Erin P. Lynch  
 Nancy J. Lyon  
 Kim A. Mallett '94  
 Lisa A. Mallozzi  
 Patricia A. Maloney '75  
 Elizabeth A. Mancini '71  
 Carolyn Baker Maney '71  
 Alice Manfredi '74  
 Pauline M. Marcussen '97  
 Steven Marinucci  
 Judith V. Marshall '82  
 Cynthia A. Martin '95  
 David Mathewson  
 William J. McAtee '68  
 Kenneth F. McCabe  
 Mary-Ann McComiskey '79  
 Thomas E. McDermott '89  
 William L. McKinney  
 Annmarie McMahon  
 Mary A. McMahon '70  
 William A. Menard '98  
 Annmarie Messier  
 Michael J. Geremia Painting  
 Joseph L. Migliori, MD  
 James P. Mirza '82  
 William E. Monast '79  
 David C. Moretti  
 Lucille T. Morrisette  
 Marilyn Munoz-Gelfuso '08

Blanche R. Murray  
 Jaime R. Nash  
 Susan E. Neimic '92  
 Donald J. Nester Jr. '92  
 Newport County Chamber  
 of Commerce  
 Diane S. Nobles  
 Jeanne B. Nordquist  
 Sheri L. Norton '83, '85  
 Ellen C. Ogrodnik  
 Claire J. Oliveira '67  
 Edward J. O'Neill '67  
 Jeremiah W. O'Neill '05  
 Ophthalmic Surgeons Ltd.  
 Paulette A. Osterman  
 Ovoo Creative Inc.  
 Charles Owen  
 Joseph H. Parys  
 Thomas J. Pascone '84  
 Geraldine M. Peixoto '07  
 Michael J. Pereira '78  
 Perfectly Fit Inc.  
 Carol L. Perry '81  
 Robert E. Pierce '82  
 Michael E. Q. Pilson  
 Janine '81 and  
 John Pitocco '83  
 Steven Pont  
 Howard W. Poulten  
 Linda A. '73 and  
 Louis A. Pullano '73  
 Quick Fab Inc.  
 Dolina M. Quigley '90  
 Sandra M. Rainone '98  
 Leonard C. Rathbun '70  
 Lawrence L. Reger  
 Denise M. Remillard '98  
 Renaissance-Alliance  
 Jennifer N. Rennick-Carroll '91  
 Rhode Island College  
 John S. Ribezzo '69  
 Lynlee Riccio '75  
 Linda M. Richard  
 Elizabeth E. Ripa '73, '95  
 Robert and Donna Colucci  
 Charitable Foundation  
 Margaret and  
 Frank Robinson  
 Edward J. Rooney Sr.  
 Jo Ann B. Rosemont  
 Michael C. Rosenberg  
 John M. Rossi '85



Ephraim Doumato Jewelers  
 Cheryl A. Dugas-Ethier, CPA  
 '82 and Paul H. Ethier '73  
 Kathleen A. Faltus '75  
 John T. Faria '68  
 Tonia B. Fay '87  
 William R. Ferland  
 Ann and William Ferrante  
 John J. Ferreira '77  
 Flaunt Boutique Inc.  
 Fleming & Associates  
 Charlene C. Fletcher '75  
 Edward J. Foreman '68  
 Sheila M. Fournier '92  
 Gordon D. Fox  
 The Friendly Home Inc.  
 David M. Furtado '84

Dietrich K. Roth  
 Marie E. Rousseau '91  
 Sharon M. Rowley '02  
 Andrew A. Ruscito '80  
 Corinne C. Ruscito  
 Joseph K. Sabetta '82  
 Eve and Martin Sadd  
 Joseph S. Samek Jr. '97  
 Lila and John Sapinsley  
 Edwina and John Schuler  
 Soren D. Seale '00  
 Michael J. Sepe '68  
 Guy C. Shaffer  
 Katharine and Irving Sheldon  
 Angela G. Sibia '85  
 Barbara A. Silliman '92  
 Alice P. Silva '66, '71  
 Jan S. Sironen '84  
 Lorraine M. Slepski '76  
 Norma L. Smayda  
 Mary F. Smith  
 Maria Spooner  
 Jane and Jonathan St. Couer  
 Norma J. Stone  
 Donna L. Stravato '76  
 Marcia Sullivan  
 Richard T. Sullivan '75  
 Holly J. Susi '90  
 Judith M. Swift and  
 Charles J. F. Cofone  
 John J. Tassoni Jr.  
 Lucille M. Tefft '01  
 Alfred J. Tente '77  
 Manny Terezakis  
 Richard G. Tessier

Richard M. Tessier  
 Christine Thompson  
 William B. Thompson '04  
 Lisa L. Tincknell '86  
 Carl Toft  
 Sheila Triggs '93  
 Isabel A. Trombetti  
 Thomas P. Uva '82  
 Chris Valentine  
 William Vareika  
 Heidi J. Warner '85  
 Harry J. Waterman '82  
 Karen A. Watts  
 Bonnie D. Wheeler '96  
 Carolyn and  
 Howard Windham  
 Carol M. Wood '70  
 Yarlas, Kaplan, Santilli &  
 Moran LTD  
 John Young '06  
 Pamela B. Young  
 Louis J. Zanella  
 Li Zhu  
 Edmond S. Zuromski  
 Mary B. Zych, RN, BSN '70

**SUPPORTERS  
 SOCIETY  
 Under \$50**

Kimberly L. Allen '00  
 Luz Alvarez '02  
 Donna M. Andreozzi '88  
 Rosemary Andreozzi  
 Ross A. Atstupenas '79, '93  
 Cynthia O. Aubin '79  
 Anne M. Baglini

James R. Barrett '87  
 Joanne Beatriz '05  
 M. Christine Benoit, DMD,  
 and Bruce D. Gouin,  
 DMD  
 Mary E. Benoit '99  
 Sara L. Benz '84  
 Susan E. Bergheimer  
 Darlene E. Bickham '97  
 Catherine A. Bio '02  
 Loretta A. Bixby '82  
 Roger J. Blais '70  
 Millie A. Blessing '77  
 Deborah L. Blitz  
 Diane S. Bocchio '82  
 Richard G. Bonenfant  
 Barry J. Booth '74  
 Nicholas A. Bottone Jr. '75  
 William R. Bouchard '77  
 Joyce M. Bouressa '74, '86  
 Sandra L. Boyd '86  
 Elizabeth A. Brady '96  
 Claire V. Brisson-Banks '00  
 William B. Brown '82  
 Mary T. Bruno '82  
 Robyn D. Bucci '02  
 James Buco '73  
 Linda Burman '74  
 Joan E. Carey '79  
 Carolyn M. Carignan '70  
 Edward J. Carney '70  
 Nancy M. Carroll  
 Ann M. '81 and  
 William R. Casey '80  
 Lorraine T. Casucci '78  
 Robert S. Cerio '74  
 Sheryl A. Chabot '86  
 June A. Champagne '66  
 Beverly M. Chapman '94  
 James A. Chase '69  
 Edwina S. Cloherty  
 James D. Cogan '72  
 Melody A. Cole-Paiva '99  
 Cathleen A. Collins '90  
 Cathy Connolly  
 Susan A. Constantine '83  
 Carol A. Costello '79  
 Cathy Crevier '73  
 Jill A. Cyr  
 Louise F. Dakake '77  
 Liliane C. Davidson '98

Katherine N. Davies '07  
 Christopher J. DeBlois '74, '92  
 MaryAnn Dering '67  
 Jeffrey S. Devolve '74, '90  
 Wanda A. DeWitt '78  
 Lori A. Dobson '97  
 Audrey Domingues '98  
 Elizabeth M. Duphiney '91  
 Kathleen F. Dwyer  
 Joan P. Emin '76  
 Donna M. Esposito '72  
 Sharon P. Fedak '72  
 Thomas J. Feeley '87  
 Helen A. Felske '98  
 Barbara L. Ferreira '94  
 Stacy A. Fiore '01  
 Mary G. Fitzpatrick '90  
 Stacy A. Flowers  
 Tina J. Fowler '80  
 Aline Frappier  
 Ellen K. Frazier '82, '88  
 David E. Gabrey '93  
 Ronald K. Gagne Sr. '84  
 Rose M. Galek  
 Lucille I. Gallagher  
 Denise Y. Galligan  
 Diane S. Gallotello '80  
 Lorraine E. Gardner '67  
 Michael S. Garofalo '69  
 Kent A. Gates Jr. '88  
 Henry C. Giolitti '81  
 Mary F. Golden  
 John P. Gormley '73  
 Gene A. Grande  
 Pamela E. Grant '87  
 Albert W. Gregoire '72  
 Roslyn C. '69 and  
 Ronald A. Guarnieri '68  
 Harry G. Hajian Sr.  
 Deborah L. Hakanson '72  
 Carol S. Hamel '83  
 Brian Hammond '79  
 Lucy M. Harlow '78  
 Richard J. Harris '80  
 Dee Harrison  
 Gail and Jerry Hatfield  
 Lori-Ann Haughton





Jean M. Healey '67  
 George M. Henry '68  
 Deborah Z. Hentschell '01  
 Paul R. Hetu '88  
 John J. Hickey  
 Rosemary O. Holland '78  
 Jo Ann Horsman '70  
 Carol A. Hosey '96  
 Melissa C. Houle '94  
 Betty J. Hoxie '83, '86  
 Jeremy W. Hudson  
 John G. Humble '71, '79  
 Brenda A. Hunter '99  
 Margaret M. Jacoby  
 Edward M. Jacques  
 Regina B. Jagminas '77  
 Janice M. Johnson '01  
 Celia Joseph '96  
 Marie Y. Joseph '05  
 Janet A. Joyce '82  
 Donald Jurkowitz  
 Gerrie and  
     Richard Karasinski  
 Tracy L. Karasinski  
 Julie A. Kavanagh '71  
 Harry C. Keenan  
 Gail Kelley  
 Marilyn A. Kelly '99  
 Leslie A. Kennedy '90  
 Margaret M. Kerns '68  
 Gayle M. King '69, '94  
 Michele B. Kocon '73, '77  
 Robert P. Krekorian '67  
 Jeannette V. Krupa '87

Robert G. Lafond '97  
 Dorothy A. Langford '98  
 Susan R. LaPidus  
 Norma LaSalle  
 Anthony Lato Jr. '67  
 Kimberly J. Lauterbach '79  
 Murielle A. Levesque '82  
 Gail F. Macintosh-Hatfield '68  
 Catherine J. Maguire '82  
 Clara E. Mahan-Duclos '76  
 Lee-Ann Malo '89  
 Sandra A. Malone '70  
 M. Jeanne Mason  
 Estelle B. Mazzotta '85  
 Karen A. McKenna '82  
 Christine C. McPherson '90  
 Dennis G. Melander  
 Allen A. Mello '76  
 Edith and Joseph Menard  
 Albert R. Miller, RN '87  
 Claire T. Miner '80  
 Louise L. Misiorek '67  
 Linda M. Molod '77  
 Damon E. Monty '90  
 Kathleen Moore, Ph.D.  
 Marie-Jeanne Moquin '89  
 Debra A. Motte '72  
 Steven J. Mulcahey '72  
 Donald S. Mulholland '71  
 James J. Murphy '76  
 Robert S. Myers, CPA '77  
 Eric R. Nadeau '80  
 Lisa M. Nelson Chartier '91  
 Patricia R. North '77  
 Rose M. Northup '77

Camille M. Numrich  
 John J. O'Connor Jr. '77  
 Elizabeth J. Olean '67  
 Margaret M. Olsen '86  
 Margaret M. O'Neill '71  
 Elaine G. Ortgiesen '78  
 Barbara C. Pacheco '85  
 Ruth M. Page '06  
 Doris B. and Arthur Pallotta  
 Patricia A. Palmier '70  
 John P. Panzica  
 Barbara '80 and  
     Edward Paolino  
 Elizabeth L. and  
     John Pashkovsky  
 Cheryl D. Patrice '78  
 Joseph Pavone Jr. '72  
 Audrey A. Pearson '95  
 Linda M. Pease '74  
 Mary Frances (Andrade)  
     Perella '69  
 Maura Perrin '87  
 Meredith D. Persson '66

Janice G. Phillips '89  
 Joseph E. Picard Jr. '69  
 Brigitte R. Pierce '83  
 Dorothy A. '72 and  
     Robert J. Poirier '72  
 Patricia G. Poisson '00  
 Christine A. Pontus '77  
 Barbara A. Porrazzo '72  
 Jean M. Potvin  
 Joanne L. '77 and  
     Kenneth P. Potvin '77  
 Rita M. Price '78  
 Raymond J. Proulx '68  
 Mary J. Quarters †  
 Jean M. Radican '00  
 Helen M. Reilley '76  
 Rhode Island State Council  
     of SHRM  
 Gerard S. Richard  
 Ann T. Richards '79  
 Elizabeth B. and  
     Michael A. Romano  
 Diane C. Rondeau '97  
 Wayne Rosenberg  
 Paula J. Roy '78  
 Kathleen M. Saleem  
 Diane L. Salvias '97  
 Maureen R. Salvias '04  
 Barbara J. Sanborn  
 Peter J. Santini '66  
 Gina and Andrew Schiebren  
 Eleanor C. Schock '80  
 Albert Sevigny  
 Paul M. Shea '67  
 Becky L. Sheldon '03, '08  
 Elaine P. Sherlock '71  
 Jeanne D. Sherman  
 Lawrence W. Shumate Jr.



Nancy J. Shuster  
 Berthold S. Silverberg  
 Robert A. Silvestre  
 Mary K. Sine  
 Michael J. Smith '06  
 Sylvia A. Soares '93  
 Kathleen A. Soscia '77  
 Judy Splittgerber '85  
 Frank J. St. Pierre  
 Mark A. St. Pierre '81, '08  
 Karen M. Stein '76  
 Noreen A. Stephens '76  
 Glenna P. Stolzberg '83  
 Jillian H. Stone '10  
 Holly A. Stowik '95  
 Joan M. Strayer '77  
 Barbara Streuli  
 Rebecca A. Stryker '99  
 Denise T. Szymczuk

Joseph G. Tatro '79  
 Astrid A. Tavares '81  
 Christine A. Taylor '73  
 Margaret F. Tefft '89  
 George M. Thibodeau '66  
 Cynthia D. Thomas  
 Walter E. Thorpe '69  
 Elaine H. Thurber '73  
 Telli K. Tobiassen '91  
 Robert F. Trier '74  
 Anthony J. Tutalo, Ed.D. '66  
 Eileen S. Tuttle '98  
 Elaine M. Vallado  
 Gilberta A. VanMarter '87  
 Francis T. Vano '70  
 Sharyn M. Vicente '02  
 Florence P. Wagner '80  
 Maxine C. Warner '73  
 Madlyn Waskiewicz '84  
 Frank A. Weile '80  
 Mary J. Welch

Theresa Wells '89  
 Thomas J. Whitfield  
 Loraine A. Winthrop '03  
 Mildred L. Wowk '85  
 Georgia B. Zaborowski  
 Eileen P. Zisk



## CCRI Foundation Trustees and the Alumni Association Board members

### FOUNDATION TRUSTEES

Mark K. W. Gim, *President*  
*The Washington Trust Co.*  
 David P. Monti '72  
*Vice President*  
*RDW Group Inc.*  
 Nancy McMahon, *Secretary*  
*The Miriam Hospital*  
 Sheila M. Raposa, *Treasurer*  
*The Washington Trust Co.*  
 Ronald J. Caniglia '09 (H)  
*Past President*  
*Stand Corp.*  
 Lorne A. Adrain\*\*  
*Chair, Rhode Island Board*  
*of Governors for Higher*  
*Education*

Marisa Albini\*\*  
*Community College*  
*of Rhode Island*  
 Emilie A. Benoit  
*Roger Williams University*  
 Mary Benton  
*Retired*  
 Jennifer Bramley '11 (H)  
*Bramley Communications*  
 Stephen M. Burns\*  
*Retired*  
 Tosca N. Carpenter  
*Newport Hospital*  
 Candy J. Castaldi '80  
*Taco Inc.*  
 Loren W. Cheney\*\*  
*Retired*  
 Gerald P. Conroy\* '74  
*Office of Special Commissioner*  
*of Investigation*

Trudy Coxé  
*The Preservation Society*  
*of Newport County*  
 Ray M. Di Pasquale\*\*  
*President*  
*Community College*  
*of Rhode Island*  
 Richard V. DiGennaro '79  
*DiGennaro & Palumbo, LLP*  
 Leonard A. DiLorenzo\*  
*Retired*  
 Richard G. Edwards  
*Amica Mutual Insurance Co.*  
 Constance F. Evrard  
*Retired*  
 Joseph R. Garvey  
*Community College*  
*of Rhode Island*

George Greer  
*Navigator Investments LLC*  
 John I. Howell Jr.  
*Beacon Communications Inc.*  
 Walter P. Jachna '98  
*Tuition Management Systems*  
 Richard B. Jaffe  
*Davol Square Jewelry Mart*  
*Co. Inc.*  
 George J. Jezierny Jr.\*  
*Retired*  
 J. Michael Kennedy  
*Gilbane Building Co.*  
 Joshua M. Klempp\*\* '04  
*SkillsUSA Rhode Island*  
 Faith A. LaSalle  
*LaSalle Law*  
 Edward J. Liston\*  
*Retired*

Eugene B. Mihaly  
Northwoods Fund  
Management Inc.

Charles F. Miller '89  
RI Higher Education Assistance  
Authority

Monty J. Monteiro '68  
Retired

Blanche R. Murray\*  
Retired

John A. Napolitano '71  
Newport Financial Associates

Charles L. Nault  
Atrion Networking Corp.

Mildred T. Nichols\*  
Retired

Edna O'Neill Mattson  
Community College  
of Rhode Island

Sandra J. Pattie '76  
BankNewport

Sondra V. Pitts '66  
Retired

Joseph M. Polisenia '82, '85  
Town of Johnston

John G. Quinn Jr.  
The Royal Bank of Scotland  
Group PLC

John S. Renza Jr.  
Community College  
of Rhode Island

Alan H. Salisbury  
Retired

Scott Seaback  
RI Temps Inc.

Robert J. Shea Jr.\*\*  
Community College of  
Rhode Island

Catherine B. Sloan  
Sloan Associates

Deborah A. Smith  
Retired

Solomon A. Solomon '03 (H)  
Retired

Bruce D. Stein '75  
Retired

Keith W. Stokes  
Rhode Island Economic  
Development Corp.

Jody J. Sullivan  
Newport County Chamber  
of Commerce

C. June Tow  
Community activist

David P. Ward  
The ANGELL Pension Group  
Inc.

Beverly J. Wiley  
Community College  
of Rhode Island

Ellen L. Yost  
Residential Properties Ltd.

**ALUMNI  
ASSOCIATION  
BOARD**

Joshua M. Klemp '04  
President  
SkillsUSA Rhode Island

Louis J. Saccoccio '68  
President-elect  
University of Rhode Island

Sandra V. Sokoll '76, '01  
Secretary  
Community College  
of Rhode Island

Richard V. DiGennaro '79  
Treasurer  
DiGennaro & Palumbo LLP

Sondra V. Pitts '66  
Past President  
Retired

Aaron A. Abbott '91, '96  
Citizens Bank

Marisa Albini\*\*  
Community College  
of Rhode Island

Michael A. Archetto '75  
Community College  
of Rhode Island

John P. Bettencourt '94  
Sleepy's LLC

Ronald J. Caniglia '09 (H)  
Stand Corp.

Eric A. Contre '98  
Duffy & Sweeney Ltd.

Joan M. DeSantis '67  
Retired

Ray M. Di Pasquale\*\*  
President  
Community College  
of Rhode Island

Thomas P. Feather '94  
Community College  
of Rhode Island

Joseph T. Fleming '74  
Fleming & Associates

Christopher M. Hager '93  
Fidelity Investments

Paula S. Lahoud\* '67  
Career Focus

Judith E. Maccarone '99  
Bank of America

Marjorie H. Martiesian '66  
Retired

Jane M. Masso '89  
Breezy Knoll Child Care Center

Carl L. Mattson Jr. '82  
Blarney Stone Energy LLC

Brian P. McConaghy '90  
Bank of America

Antonia G. McGuire '75  
Edward M. Kennedy  
Community Health Center

Inez M. Mello, MBA '87  
Carlin, Charron & Rosen LLP

Monty J. Monteiro '68  
Retired

Daniel P. Moriarty '73  
J. Arthur Trudeau Memorial  
Center

Glenda M. Morrison '87  
The Beacon Mutual Insurance Co.

Joshua A. Navarro '11  
CCRI Student Representative

John R. O'Leary '75  
University of Rhode Island

Thomas W. Quinlan '96  
The Washington Trust Co.

Sandra M. Rainone '98  
Retired

Helen A. Valcourt '81  
Our Lady of Fatima Hospital

The CCRI Office of Institutional  
Advancement provides direction  
for the Foundation and Alumni  
Association.

**STAFF**

Ray Di Pasquale  
President, Interim Dean  
of Institutional Advancement

Marisa Albini  
Director of Alumni Affairs  
and Alumni Development

Marjorie Briody  
Grant Writer/Manager

Heather Butler  
Raisers' Edge Manager

Lynn Halmi  
Campaign Assistant

Robin McDuff  
Administrative Assistant

Geraldine Peixoto  
Special Events and Annual Fund  
Coordinator

Larry Shumate  
Fiscal Manager

