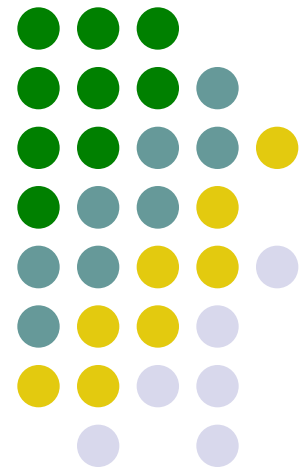


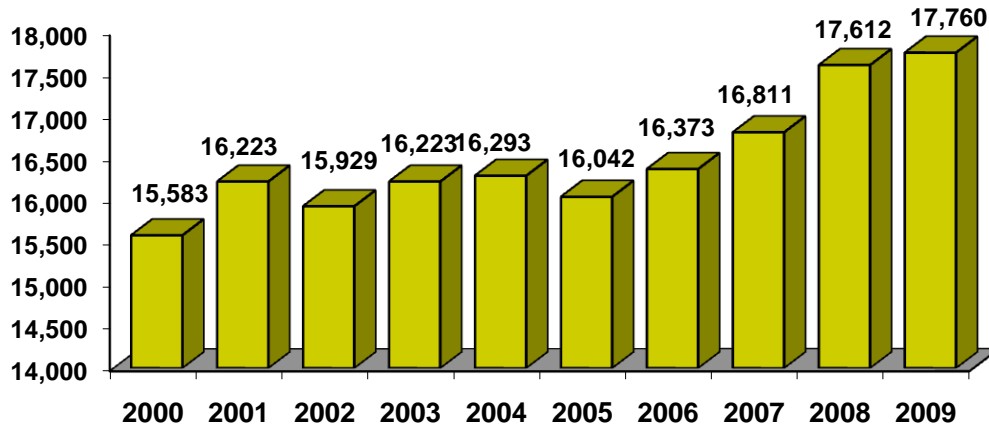
Community College of Rhode Island

Enrollment Report: Fall 2009 Who Are Our Students?

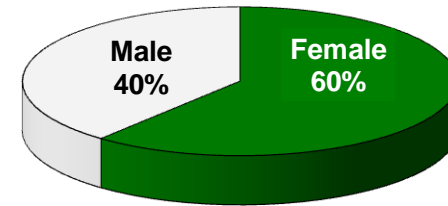
William LeBlanc, Institutional Research & Planning



FALL CREDIT HEADCOUNT ENROLLMENT 2000 TO 2009

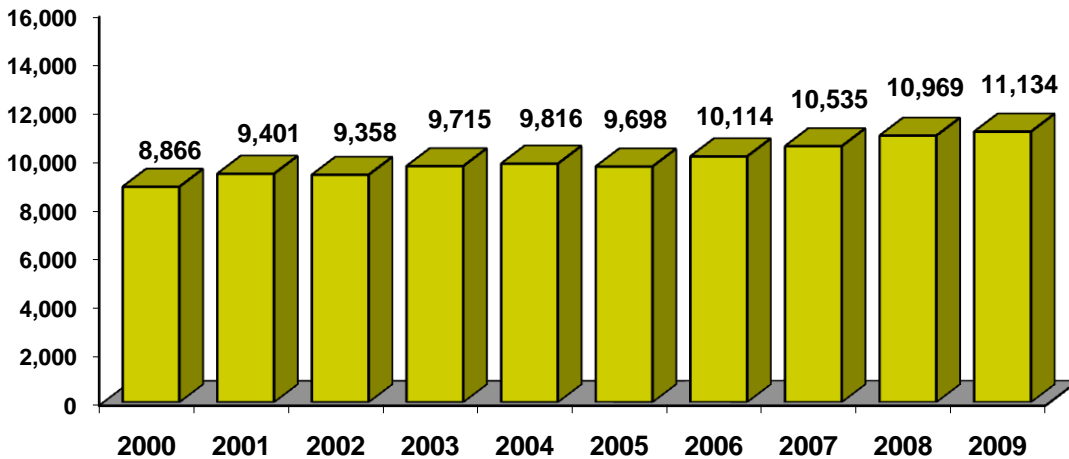


Fall 2009 Enrollment by Gender



CCRI

FALL CREDIT FTE ENROLLMENT 2000 TO 2009

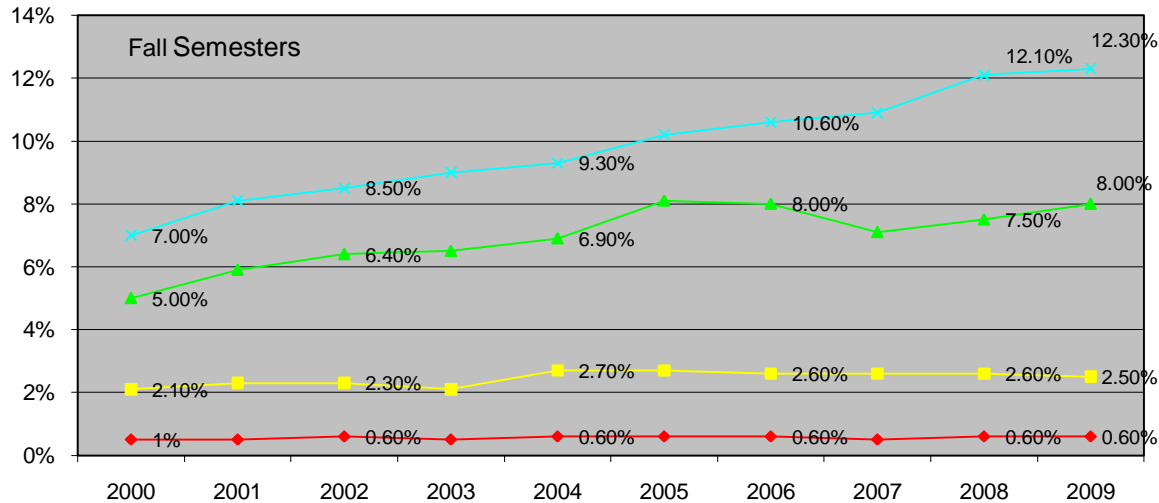


62.5% Part-time
37.5% Full-time

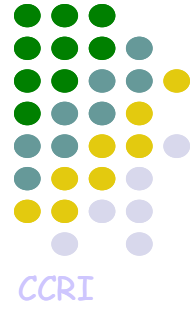
Residency		
Rhode Island	16,934	95.3%
Out-of-State		
Connecticut	50	
Massachusetts	725	
Other	36	
Out-of-State Total	811	4.6%
Non-Resident Aliens	15	0.1%
Total Enrollment	17,760	100%

MINORITY ENROLLMENT HISTORY

(17 multi-racial in 2009 not included in graph)



Fall 2009:
23.5%
Minority
 (Fall 2008: 22.8%)



STUDENT CREDIT HOURS & REMEDIAL-DEVELOPMENTAL CREDIT HOURS

	Fall 2008	Fall 2009	% Change '08 - '09
Standard Credit	132,999 88%	134,929 88%	0%
Remedial/Developmental	18,111 12%	18,582 12%	0%
Total	151,110 100%	153,511 100%	+1.6%

Instructional Activity

Student Credit Hours

School Year	Fall Credit Hours
2008-2009	153,511
2007-2008	145,052
2006-2007	139,626
2005-2006	133,653
2004-2005	135,765
2003-2004	134,106
2002-2003	129,897
2001-2002	130,792
2000-2001	123,740
1999-2000	122,607
1998-1999	121,671

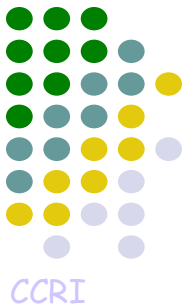
Three Student “Cultures”- Fall ‘09

- Traditional (5,032 or 28% of students, down from 30% ‘08)
 - Less than 20 years of age
- Delayed Entry or Returning (5,837 or 33% of students)
 - 20 to 24 years of age
- Adult Student Learner (6,882 or 39% of students)
 - 25 years and older

Also, there are different enrollment trends between full and part time students in each “culture”

Note: 9 with unknown age excluded

Community College of Rhode Island: Highlights of Fall 2009 Enrollment



- Headcount enrollment totaled 17,760 students, an increase of 148 students (+0.8%) from last fall. This is the highest headcount enrollment at CCRI since 1992.
- Full-time equivalent (FTE) enrollment increased by 165 or 1.5% to 11,143 from last fall (10,969 FTE's). This is the highest FTE enrollment in the college's history!
- A record number of student credit hours was produced this fall (153,511). Of this total, 18,582 student credit hours were from remedial/developmental courses (12% of total).
- College-wide, 6,663 students enrolled full time or 144 more (+2.2%) than last fall.
- The percent of minority students increased from 22.8% to 23.5%. Also, 1,325 did not report their race/ethnicity and another 508 selected "Other."
- Distance Learning enrollment increased 39% from 864 to 1,201 students.
- From 2000 to 2008, the percent of students 25 years of age or older decreased from 42% (6,600) to 38.3% (6,752). In 2009, this percent of enrollment increased slightly to 38.8%.
- In-state enrollments slightly increased for the second consecutive year and male enrollments increased to 40%.
- Training & Development credit enrollments rose from 368 to 419 students or 15.4%