

Community College of Rhode Island

Spring 2015 Headcount Enrollments

	Female	Male	Total	Percent
Full-Time	2,191	2,198	4,389	27.6%
Part-time	7,178	4,314	11,492	72.4%
Total	9,369	6,512	15,881	
Percent	59.0%	41.0%		

40% of students are age 25 and over



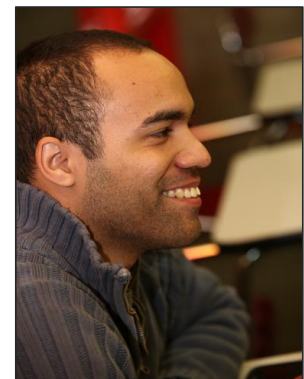
Age	Full-Time	Part-Time	Total
Less Than 20	1,894	1,834	3,728
20-24	1,656	4,172	5,828
25-34	580	3,215	3,795
35-44	173	1,366	1,539
45 and Over	85	904	989
Unknown	1	1	2
Total	4,389	11,492	15,881

Headcount by Race/Ethnicity	Female		Male		Total		Grand Total	Percent of Total
	Full	Part	Full	Part	Full	Part		
Black or African-American	113	694	181	519	294	1,213	1,507	9.5%
Hispanic/Latino	335	1,546	317	863	652	2,409	3,061	19.3%
American Indian/Alaskan Native	6	44	10	19	16	63	79	0.5%
Asian	61	223	65	139	126	362	488	3.1%
Native Hawaiian/Pacific Islander	0	1	1	3	1	4	5	<0.1%
White	1,470	4,008	1,436	2,415	2,906	6,423	9,329	58.7%
Two or more races	126	337	118	157	244	494	738	4.6%
Not Reported	80	325	70	199	150	524	674	4.2%
Total	2,191	7,178	2,198	4,314	4,389	11,492	15,881	100.0%

Spring History		
Year	FTE	Headcount
2015	9,262	15,881
2014	9,515	16,334
2013	9,907	16,818
2012	10,070	17,178
2011	10,038	16,673
2010	10,408	17,162
2009	9,690	16,005
2008	9,573	15,921
2007	9,066	15,143
2006	8,693	14,595
2005	9,045	15,460
2004	8,920	15,272
2003	8,442	14,742
2002	8,450	15,181
2001	7,845	14,464

Race/Ethnicity
 Minority Headcount
 5,878
 Minority Percent
 37.0%

Spring 2015 headcount enrollment decreased 3.3% from last spring. FTE enrollment decreased 2.7%.



Office of Institutional Research and Planning

February 12, 2015